

Tuberin (Phospho-Thr1462) Polyclonal Antibody

Catalog No: #12373



Package Size: #12373-1 50ul #12373-2 100ul

Orders: order@signalwayantibody.comSupport: tech@signalwayantibody.com

Description

Product Name	Tuberin (Phospho-Thr1462) Polyclonal Antibody
Host Species	Rabbit
Clonality	Polyclonal
Purification	The antibody was affinity-purified from rabbit antiserum by affinity-chromatography using epitope-specific immunogen.
Applications	WB IHC IF ELISA
Species Reactivity	Hu Ms Rt
Specificity	Phospho-Tuberin (T1462) Polyclonal Antibody detects endogenous levels of Tuberin protein only when phosphorylated at T1462.
Immunogen Type	peptide
Immunogen Description	Synthesized peptide derived from human Tuberin around the phosphorylation site of T1462.
Target Name	Tuberin
Modification	Phospho-Thr1462
Other Names	TSC2; TSC4; Tuberin; Tuberous sclerosis 2 protein
Accession No.	Swiss-Prot: P49815NCBI Gene ID: 7249
Target Species	human
SDS-PAGE MW	200kd
Concentration	1mg/ml
Formulation	Liquid in PBS containing 50% glycerol, 0.5% BSA and 0.02% sodium azide.
Storage	Store at -20°C/1 year

Application Details

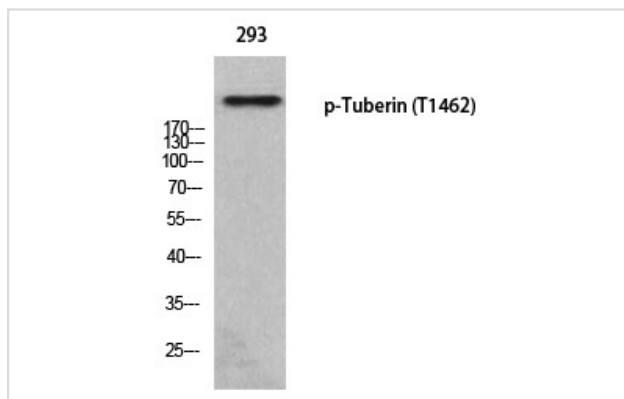
Western Blot: 1:500-2000

Immunohistochemistry: 1/100 - 1/300

Immunofluorescence: 1/200 - 1/1000

ELISA: 1/5000

Images



Western blot analysis of 293 using p-Tuberin (T1462) antibody.

Note: This product is for in vitro research use only and is not intended for use in humans or animals.