

## Plk (Phospho-Thr210) Polyclonal Antibody

Catalog No: #12372



Package Size: #12372-1 50ul #12372-2 100ul

Orders: [order@signalwayantibody.com](mailto:order@signalwayantibody.com)Support: [tech@signalwayantibody.com](mailto:tech@signalwayantibody.com)

## Description

Product Name	Plk (Phospho-Thr210) Polyclonal Antibody
Host Species	Rabbit
Clonality	Polyclonal
Purification	The antibody was affinity-purified from rabbit antiserum by affinity-chromatography using epitope-specific immunogen.
Applications	WB IHC ELISA
Species Reactivity	Hu Ms Rt
Specificity	Phospho-Plk (T210) Polyclonal Antibody detects endogenous levels of Plk protein only when phosphorylated at T210.
Immunogen Type	peptide
Immunogen Description	Synthesized peptide derived from human Plk around the phosphorylation site of T210.
Target Name	Plk
Modification	Phospho-Thr210
Other Names	PLK1; PLK; Serine/threonine-protein kinase PLK1; Polo-like kinase 1; PLK-1; Serine/threonine-protein kinase 13; STPK13
Accession No.	Swiss-Prot: P53350NCBI Gene ID: 5347
Target Species	human
SDS-PAGE MW	70kd
Concentration	1mg/ml
Formulation	Liquid in PBS containing 50% glycerol, 0.5% BSA and 0.02% sodium azide.
Storage	Store at -20°C/1 year

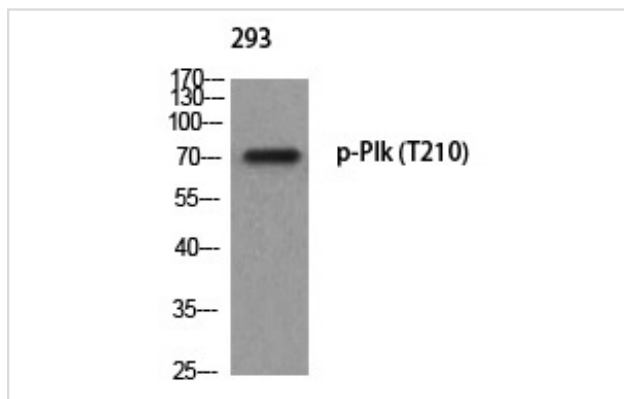
## Application Details

Western Blot: 1:500-2000

Immunohistochemistry: 1/100 - 1/300

ELISA: 1/5000

## Images



Western blot analysis of 293 using p-Plk (T210) antibody.

---

Note: This product is for in vitro research use only and is not intended for use in humans or animals.