

Parkin (Phospho-Ser131) Polyclonal Antibody

Catalog No: #12371



Package Size: #12371-1 50ul #12371-2 100ul

Orders: order@signalwayantibody.comSupport: tech@signalwayantibody.com

Description

Product Name	Parkin (Phospho-Ser131) Polyclonal Antibody
Host Species	Rabbit
Clonality	Polyclonal
Purification	The antibody was affinity-purified from rabbit antiserum by affinity-chromatography using epitope-specific immunogen.
Applications	WB IHC ELISA
Species Reactivity	Hu
Specificity	Phospho-Parkin (S131) Polyclonal Antibody detects endogenous levels of Parkin protein only when phosphorylated at S131.
Immunogen Type	peptide
Immunogen Description	Synthesized peptide derived from human Parkin around the phosphorylation site of S131.
Target Name	Parkin
Modification	Phospho-Ser131
Other Names	PARK2; PRKN; E3 ubiquitin-protein ligase parkin; Parkinson juvenile disease protein 2; Parkinson disease protein 2
Accession No.	Swiss-Prot: O60260NCBI Gene ID: 5071
Target Species	human
SDS-PAGE MW	51kd
Concentration	1mg/ml
Formulation	Liquid in PBS containing 50% glycerol, 0.5% BSA and 0.02% sodium azide.
Storage	Store at -20°C/1 year

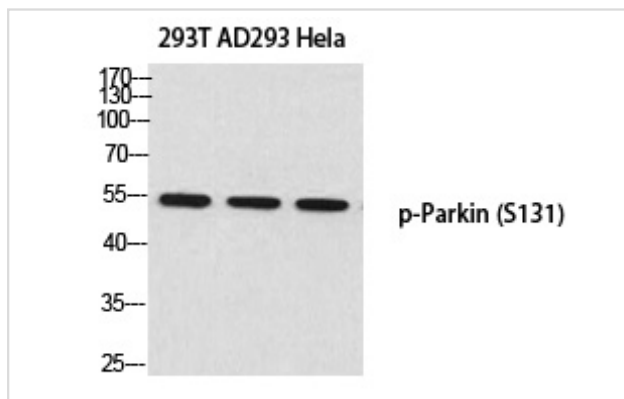
Application Details

Western Blot: 1:500-2000

Immunohistochemistry: 1/100 - 1/300

ELISA: 1/20000

Images



Western blot analysis of 293T AD293 Hela using p-Parkin (S131) antibody.

Note: This product is for in vitro research use only and is not intended for use in humans or animals.