

## DREAM (Phospho-Ser63) Polyclonal Antibody

Catalog No: #12366



Package Size: #12366-1 50ul #12366-2 100ul

Orders: [order@signalwayantibody.com](mailto:order@signalwayantibody.com)Support: [tech@signalwayantibody.com](mailto:tech@signalwayantibody.com)

## Description

Product Name	DREAM (Phospho-Ser63) Polyclonal Antibody
Host Species	Rabbit
Clonality	Polyclonal
Purification	The antibody was affinity-purified from rabbit antiserum by affinity-chromatography using epitope-specific immunogen.
Applications	WB IHC IF ELISA
Species Reactivity	Hu Ms
Specificity	Phospho-DREAM (S63) Polyclonal Antibody detects endogenous levels of DREAM protein only when phosphorylated at S63.
Immunogen Type	peptide
Immunogen Description	Synthesized peptide derived from human DREAM around the phosphorylation site of S63.
Target Name	DREAM
Modification	Phospho-Ser63
Other Names	KCNIP3; CSEN; DREAM; KCHIP3; Calsenilin; A-type potassium channel modulatory protein 3; DRE-antagonist modulator; DREAM; Kv channel-interacting protein 3; KChIP3
Accession No.	Swiss-Prot: Q9Y2W7NCBI Gene ID: 30818
Target Species	human
SDS-PAGE MW	29kd
Concentration	1mg/ml
Formulation	Liquid in PBS containing 50% glycerol, 0.5% BSA and 0.02% sodium azide.
Storage	Store at -20°C/1 year

## Application Details

Western blotting: 1/500 - 1/2000

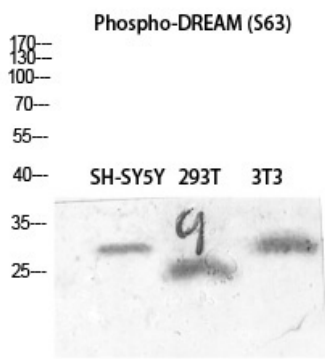
Immunohistochemistry: 1/100 - 1/300

Immunofluorescence: 1/200 - 1/1000

ELISA: 1/20000

Not yet tested in other applications

## Images



Western blot analysis of SH-SY5Y 293T 3T3 lysis using Phospho-DREAM (S63) antibody.

---

Note: This product is for in vitro research use only and is not intended for use in humans or animals.