

## Histone H1 (Phospho-Thr17) Polyclonal Antibody

Catalog No: #12365



Package Size: #12365-1 50ul #12365-2 100ul

Orders: [order@signalwayantibody.com](mailto:order@signalwayantibody.com)Support: [tech@signalwayantibody.com](mailto:tech@signalwayantibody.com)

## Description

Product Name	Histone H1 (Phospho-Thr17) Polyclonal Antibody
Host Species	Rabbit
Clonality	Polyclonal
Purification	The antibody was affinity-purified from rabbit antiserum by affinity-chromatography using epitope-specific immunogen.
Applications	WB IHC IF ELISA
Species Reactivity	Hu Ms Mk
Specificity	Phospho-Histone H1 (T17) Polyclonal Antibody detects endogenous levels of Histone H1 protein only when phosphorylated at T17.
Immunogen Type	peptide
Immunogen Description	Synthesized peptide derived from human Histone H1 around the phosphorylation site of T17.
Target Name	Histone H1
Modification	Phospho-Thr17
Other Names	HIST1H1B; H1F5; Histone H1.5; Histone H1a; Histone H1b; Histone H1s-3; HIST1H1D; H1F3; Histone H1.3; Histone H1c; Histone H1s-2; HIST1H1E; H1F4; Histone H1.4; Histone H1b; Histone H1s-4
Accession No.	Swiss-Prot: P16401/P16402/P10412NCBI Gene ID: 3009/3007/3008
Target Species	human
SDS-PAGE MW	31kd
Concentration	1mg/ml
Formulation	Liquid in PBS containing 50% glycerol, 0.5% BSA and 0.02% sodium azide.
Storage	Store at -20°C/1 year

## Application Details

Western blotting: 1/500 - 1/2000

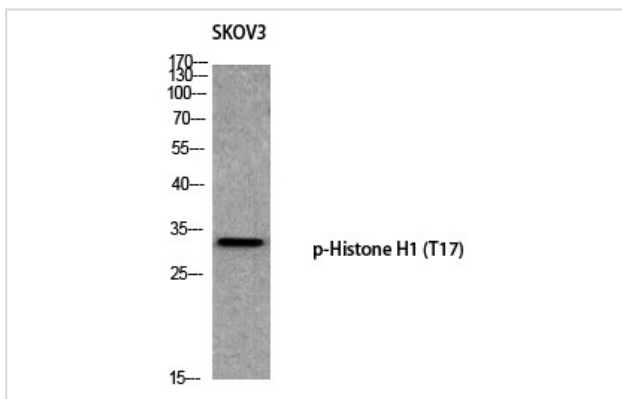
Immunohistochemistry: 1/100 - 1/300

Immunofluorescence: 1/200 - 1/1000

ELISA: 1/10000

Not yet tested in other applications

## Images



Western blot analysis of SKOV3 using p-Histone H1 (T17) antibody.

---

Note: This product is for in vitro research use only and is not intended for use in humans or animals.