

Net (Phospho-Ser357) Polyclonal Antibody

Catalog No: #12364



Package Size: #12364-1 50ul #12364-2 100ul

Orders: order@signalwayantibody.comSupport: tech@signalwayantibody.com

Description

Product Name	Net (Phospho-Ser357) Polyclonal Antibody
Host Species	Rabbit
Clonality	Polyclonal
Purification	The antibody was affinity-purified from rabbit antiserum by affinity-chromatography using epitope-specific immunogen.
Applications	WB IHC IF ELISA
Species Reactivity	Hu Ms Mk
Specificity	Phospho-Net (S357) Polyclonal Antibody detects endogenous levels of Net protein only when phosphorylated at S357.
Immunogen Type	peptide
Immunogen Description	Synthesized peptide derived from human Net around the phosphorylation site of S357.
Target Name	Net
Modification	Phospho-Ser357
Other Names	ELK3; NET; SAP2; ETS domain-containing protein Elk-3; ETS-related protein ERP; ETS-related protein NET; Serum response factor accessory protein 2; SAP-2; SRF accessory protein 2
Accession No.	Swiss-Prot: P41970NCBI Gene ID: 2004
Target Species	human
SDS-PAGE MW	38kd
Concentration	1mg/ml
Formulation	Liquid in PBS containing 50% glycerol, 0.5% BSA and 0.02% sodium azide.
Storage	Store at -20°C/1 year

Application Details

Western blotting: 1/500 - 1/2000

Immunohistochemistry: 1/100 - 1/300

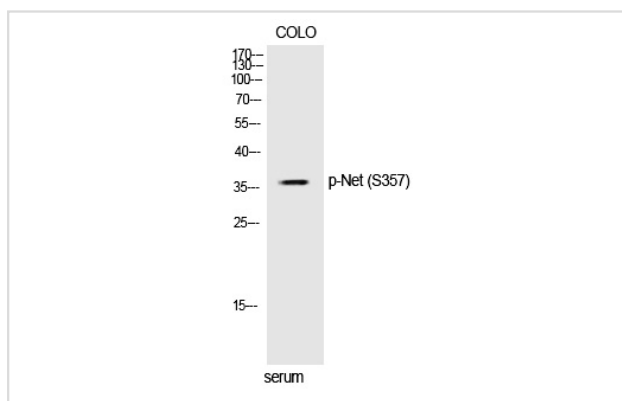
Immunofluorescence: 1/200 - 1/1000

ELISA: 1/20000

Not yet tested in other applications

Images

Western Blot analysis of COLO cells using Phospho-Net (S357) Polyclonal Antibody



Note: This product is for in vitro research use only and is not intended for use in humans or animals.