

Fusin (Phospho-Ser339) Polyclonal Antibody

Catalog No: #12362



Package Size: #12362-1 50ul #12362-2 100ul

Orders: order@signalwayantibody.comSupport: tech@signalwayantibody.com

Description

Product Name	Fusin (Phospho-Ser339) Polyclonal Antibody
Host Species	Rabbit
Clonality	Polyclonal
Purification	The antibody was affinity-purified from rabbit antiserum by affinity-chromatography using epitope-specific immunogen.
Applications	WB IHC IF ELISA
Species Reactivity	Hu Ms Rt Mk
Specificity	Phospho-Fusin (S339) Polyclonal Antibody detects endogenous levels of Fusin protein only when phosphorylated at S339.
Immunogen Type	peptide
Immunogen Description	Synthesized peptide derived from human Fusin around the phosphorylation site of S339.
Target Name	Fusin
Modification	Phospho-Ser339
Other Names	CXCR4; C-X-C chemokine receptor type 4; CXC-R4; CXCR-4; FB22; Fusin; HM89; LCR1; Leukocyte-derived seven transmembrane domain receptor; LESTR; NPYRL; Stromal cell-derived factor 1 receptor; SDF-1 receptor; CD antigen CD184
Accession No.	Swiss-Prot: P61073NCBI Gene ID: 7852
Target Species	human
SDS-PAGE MW	38kd
Concentration	1mg/ml
Formulation	Liquid in PBS containing 50% glycerol, 0.5% BSA and 0.02% sodium azide.
Storage	Store at -20°C/1 year

Application Details

Western blotting: 1/500 - 1/2000

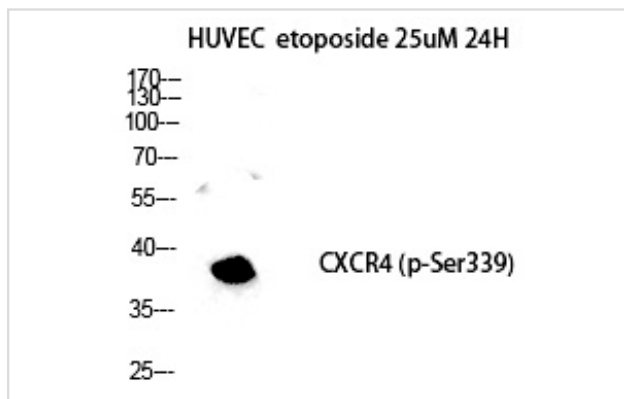
Immunohistochemistry: 1/100 - 1/300

Immunofluorescence: 1/200 - 1/1000

ELISA: 1/20000

Not yet tested in other applications

Images



Western Blot analysis of HuvEc etoposide 25uM 24H cells using Phospho-Fusin (S339) Polyclonal Antibody

Note: This product is for in vitro research use only and is not intended for use in humans or animals.