

Splicing factor 1 (Phospho-Ser82) Polyclonal Antibody

Catalog No: #12357



Package Size: #12357-1 50ul #12357-2 100ul

Orders: order@signalwayantibody.comSupport: tech@signalwayantibody.com

Description

| | |
|-----------------------|---|
| Product Name | Splicing factor 1 (Phospho-Ser82) Polyclonal Antibody |
| Host Species | Rabbit |
| Clonality | Polyclonal |
| Purification | The antibody was affinity-purified from rabbit antiserum by affinity-chromatography using epitope-specific immunogen. |
| Applications | WB IHC IF ELISA |
| Species Reactivity | Hu Ms Mk |
| Specificity | Phospho-Splicing factor 1 (S82) Polyclonal Antibody detects endogenous levels of Splicing factor 1 protein only when phosphorylated at S82. |
| Immunogen Type | peptide |
| Immunogen Description | Synthesized peptide derived from human Splicing factor 1 around the phosphorylation site of S82. |
| Target Name | Splicing factor 1 |
| Modification | Phospho-Ser82 |
| Other Names | SF1; ZFM1; ZNF162; Splicing factor 1; Mammalian branch point-binding protein; BBP; mBBP; Transcription factor ZFM1; Zinc finger gene in MEN1 locus; Zinc finger protein 162 |
| Accession No. | Swiss-Prot: Q15637NCBI Gene ID: 7536 |
| Target Species | human |
| SDS-PAGE MW | 68kd |
| Concentration | 1mg/ml |
| Formulation | Liquid in PBS containing 50% glycerol, 0.5% BSA and 0.02% sodium azide. |
| Storage | Store at -20°C/1 year |

Application Details

Western blotting: 1/500 - 1/2000

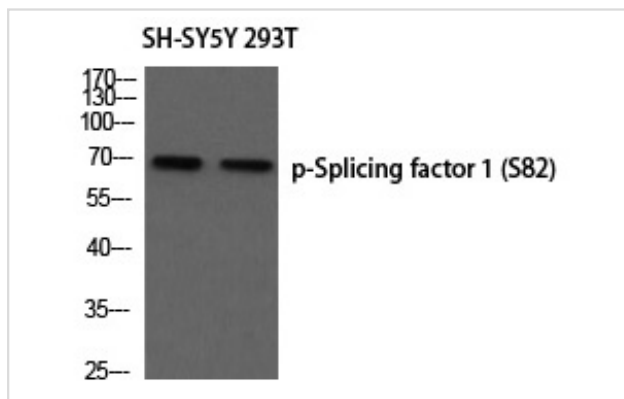
Immunohistochemistry: 1/100 - 1/300

Immunofluorescence: 1/200 - 1/1000

ELISA: 1/5000

Not yet tested in other applications

Images



Western blot analysis of SH-SY5Y 293T using p-Splicing factor 1 (S82) antibody.

Note: This product is for in vitro research use only and is not intended for use in humans or animals.