

Separase (Phospho-Ser801) Polyclonal Antibody

Catalog No: #12353



Package Size: #12353-1 50ul #12353-2 100ul

Orders: order@signalwayantibody.comSupport: tech@signalwayantibody.com

Description

Product Name	Separase (Phospho-Ser801) Polyclonal Antibody
Host Species	Rabbit
Clonality	Polyclonal
Purification	The antibody was affinity-purified from rabbit antiserum by affinity-chromatography using epitope-specific immunogen.
Applications	WB IHC IF ELISA
Species Reactivity	Hu Ms
Specificity	Phospho-Separase (S801) Polyclonal Antibody detects endogenous levels of Separase protein only when phosphorylated at S801.
Immunogen Type	peptide
Immunogen Description	Synthesized peptide derived from human Separase around the phosphorylation site of S801.
Target Name	Separase
Modification	Phospho-Ser801
Other Names	ESPL1; ESP1; KIAA0165; Separin; Caspase-like protein ESPL1; Extra spindle poles-like 1 protein; Separase
Accession No.	Swiss-Prot: Q14674NCBI Gene ID: 9700
Target Species	human
SDS-PAGE MW	230kd
Concentration	1mg/ml
Formulation	Liquid in PBS containing 50% glycerol, 0.5% BSA and 0.02% sodium azide.
Storage	Store at -20°C/1 year

Application Details

Western blotting: 1/500 - 1/2000

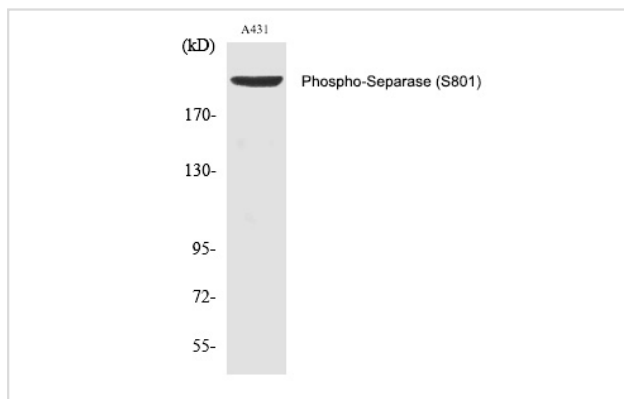
Immunohistochemistry: 1/100 - 1/300

Immunofluorescence: 1/200 - 1/1000

ELISA: 1/40000

Not yet tested in other applications

Images



Western Blot analysis of A431 cells using Phospho-Separase (S801) Polyclonal Antibody

Note: This product is for in vitro research use only and is not intended for use in humans or animals.