

Crk-L (Phospho-Tyr207) Polyclonal Antibody

Catalog No: #12350



Package Size: #12350-1 50ul #12350-2 100ul

Orders: order@signalwayantibody.comSupport: tech@signalwayantibody.com

Description

Product Name	Crk-L (Phospho-Tyr207) Polyclonal Antibody
Host Species	Rabbit
Clonality	Polyclonal
Purification	The antibody was affinity-purified from rabbit antiserum by affinity-chromatography using epitope-specific immunogen.
Applications	WB IHC IF ELISA
Species Reactivity	Hu Ms Rt Mk
Specificity	Phospho-Crk-L (Y207) Polyclonal Antibody detects endogenous levels of Crk-L protein only when phosphorylated at Y207.
Immunogen Type	peptide
Immunogen Description	Synthesized peptide derived from human Crk-L around the phosphorylation site of Y207.
Target Name	Crk-L
Modification	Phospho-Tyr207
Other Names	CRKL; Crk-like protein
Accession No.	Swiss-Prot: P46109NCBI Gene ID: 1399
Target Species	human
SDS-PAGE MW	39kd
Concentration	1mg/ml
Formulation	Liquid in PBS containing 50% glycerol, 0.5% BSA and 0.02% sodium azide.
Storage	Store at -20°C/1 year

Application Details

Western blotting: 1/500 - 1/2000

Immunohistochemistry: 1/100 - 1/300

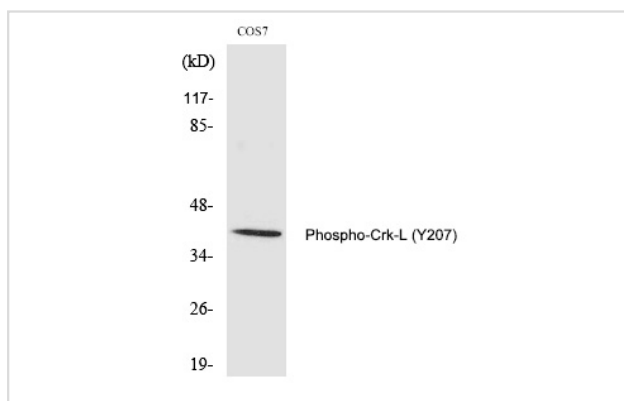
Immunofluorescence: 1/200 - 1/1000

ELISA: 1/5000

Not yet tested in other applications

Images

Western Blot analysis of COS7 cells using Phospho-Crk-L (Y207) Polyclonal Antibody



Note: This product is for in vitro research use only and is not intended for use in humans or animals.