

Cot (Phospho-Thr290) Polyclonal Antibody

Catalog No: #12348



Package Size: #12348-1 50ul #12348-2 100ul

Orders: order@signalwayantibody.comSupport: tech@signalwayantibody.com

Description

Product Name	Cot (Phospho-Thr290) Polyclonal Antibody
Host Species	Rabbit
Clonality	Polyclonal
Purification	The antibody was affinity-purified from rabbit antiserum by affinity-chromatography using epitope-specific immunogen.
Applications	WB IHC IF ELISA
Species Reactivity	Hu Ms Rt
Specificity	Phospho-Cot (T290) Polyclonal Antibody detects endogenous levels of Cot protein only when phosphorylated at T290.
Immunogen Type	peptide
Immunogen Description	Synthesized peptide derived from human Cot around the phosphorylation site of T290.
Target Name	Cot
Modification	Phospho-Thr290
Other Names	MAP3K8; COT; ESTF; Mitogen-activated protein kinase kinase kinase 8; Cancer Osaka thyroid oncogene; Proto-oncogene c-Cot; Serine/threonine-protein kinase cot; Tumor progression locus 2; TPL-2
Accession No.	Swiss-Prot: P41279NCBI Gene ID: 1326
Target Species	human
SDS-PAGE MW	60kd
Concentration	1mg/ml
Formulation	Liquid in PBS containing 50% glycerol, 0.5% BSA and 0.02% sodium azide.
Storage	Store at -20°C/1 year

Application Details

Western blotting: 1/500 - 1/2000

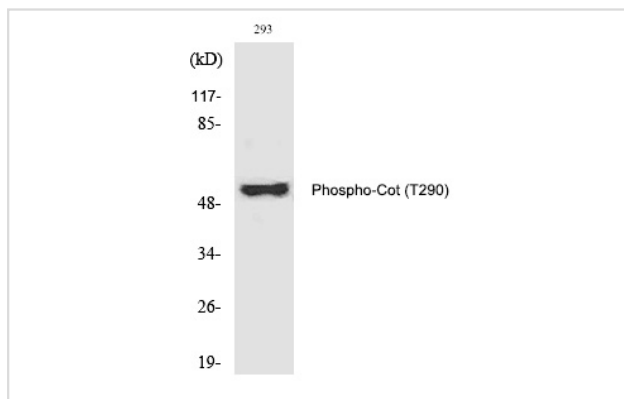
Immunohistochemistry: 1/100 - 1/300

Immunofluorescence: 1/200 - 1/1000

ELISA: 1/40000

Not yet tested in other applications

Images



Western Blot analysis of 293 cells using Phospho-Cot (T290) Polyclonal Antibody

Note: This product is for in vitro research use only and is not intended for use in humans or animals.