

p38 (Phospho-Tyr323) Polyclonal Antibody

Catalog No: #12322



Package Size: #12322-1 50ul #12322-2 100ul

Orders: order@signalwayantibody.comSupport: tech@signalwayantibody.com

Description

Product Name	p38 (Phospho-Tyr323) Polyclonal Antibody
Host Species	Rabbit
Clonality	Polyclonal
Purification	The antibody was affinity-purified from rabbit antiserum by affinity-chromatography using epitope-specific immunogen.
Applications	WB IHC ELISA
Species Reactivity	Hu Ms Rt
Specificity	Phospho-p38 (Y323) Polyclonal Antibody detects endogenous levels of p38 protein only when phosphorylated at Y323.
Immunogen Type	peptide
Immunogen Description	Synthesized peptide derived from human p38 around the phosphorylation site of Y323.
Target Name	p38
Modification	Phospho-Tyr323
Other Names	MAPK14; CSBP; CSBP1; CSBP2; CSPB1; MXI2; SAPK2A; Mitogen-activated protein kinase 14; MAP kinase 14; MAPK 14; Cytokine suppressive anti-inflammatory drug-binding protein; CSAID-binding protein; CSBP; MAP kinase MXI2; MAX-interacting protein
Accession No.	Swiss-Prot: Q16539NCBI Gene ID: 1432
Target Species	human
SDS-PAGE MW	35kd
Concentration	1mg/ml
Formulation	Liquid in PBS containing 50% glycerol, 0.5% BSA and 0.02% sodium azide.
Storage	Store at -20°C/1 year

Application Details

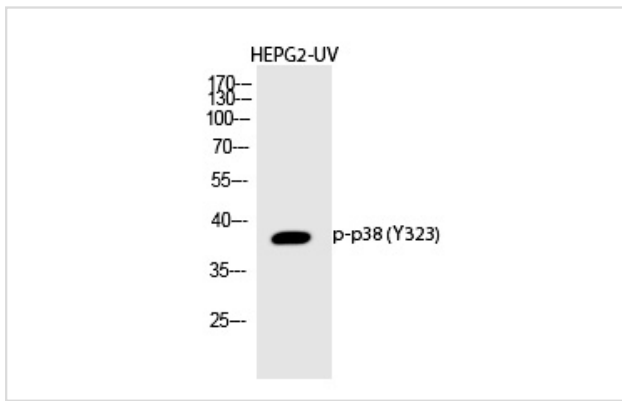
Western blotting: 1/500 - 1/2000

Immunohistochemistry: 1/100 - 1/300

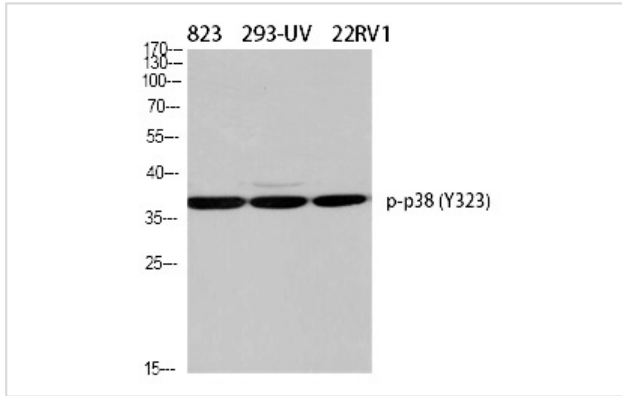
ELISA: 1/5000

Not yet tested in other applications

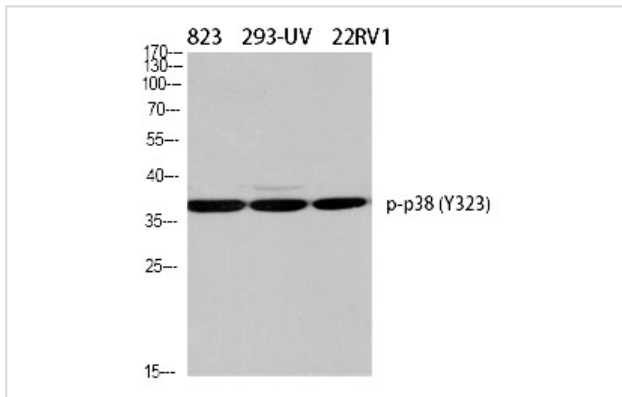
Images



Western Blot analysis of HEPG2-UV cells using Phospho-p38 (Y323) Polyclonal Antibody



Western Blot analysis of 823 293-UV 22RV1 cells using Phospho-p38 (Y323) Polyclonal Antibody



Western Blot analysis of HELA using Phospho-p38 (Y323) Polyclonal Antibody.

Note: This product is for in vitro research use only and is not intended for use in humans or animals.