

Bmx (Phospho-Tyr566) Polyclonal Antibody

Catalog No: #12321



Package Size: #12321-1 50ul #12321-2 100ul

Orders: order@signalwayantibody.comSupport: tech@signalwayantibody.com

Description

Product Name	Bmx (Phospho-Tyr566) Polyclonal Antibody
Host Species	Rabbit
Clonality	Polyclonal
Purification	The antibody was affinity-purified from rabbit antiserum by affinity-chromatography using epitope-specific immunogen.
Applications	WB IHC ELISA
Species Reactivity	Hu Ms
Specificity	Phospho-Bmx (Y566) Polyclonal Antibody detects endogenous levels of Bmx protein only when phosphorylated at Y566.
Immunogen Type	peptide
Immunogen Description	Synthesized peptide derived from human Bmx around the phosphorylation site of Y566.
Target Name	Bmx
Modification	Phospho-Tyr566
Other Names	BMX; Cytoplasmic tyrosine-protein kinase BMX; Bone marrow tyrosine kinase gene in chromosome X protein; Epithelial and endothelial tyrosine kinase; ETK; NTK38
Accession No.	Swiss-Prot: P51813NCBI Gene ID: 660
Target Species	human
SDS-PAGE MW	76kd
Concentration	1mg/ml
Formulation	Liquid in PBS containing 50% glycerol, 0.5% BSA and 0.02% sodium azide.
Storage	Store at -20°C/1 year

Application Details

Western blotting: 1/500 - 1/2000

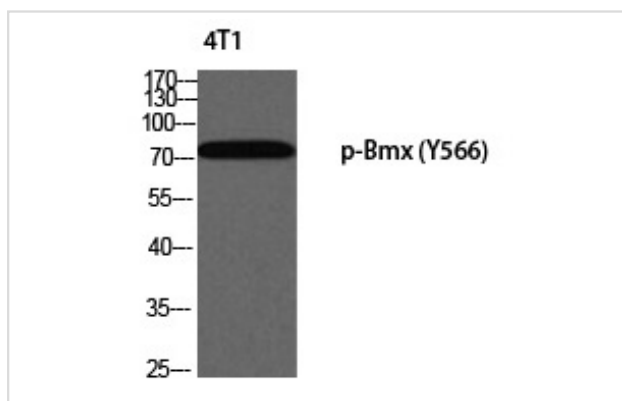
Immunohistochemistry: 1/100 - 1/300

ELISA: 1/10000

Not yet tested in other applications

Images

Western blot analysis of 4T1 using p-Bmx (Y566) antibody.



Note: This product is for in vitro research use only and is not intended for use in humans or animals.