

# PKC $\alpha$ (Phospho-Thr638) Polyclonal Antibody

Catalog No: #12317



Package Size: #12317-1 50ul #12317-2 100ul

Orders: [order@signalwayantibody.com](mailto:order@signalwayantibody.com)Support: [tech@signalwayantibody.com](mailto:tech@signalwayantibody.com)

## Description

Product Name	PKC $\alpha$ (Phospho-Thr638) Polyclonal Antibody
Host Species	Rabbit
Clonality	Polyclonal
Purification	The antibody was affinity-purified from rabbit antiserum by affinity-chromatography using epitope-specific immunogen.
Applications	WB IHC ELISA
Species Reactivity	Hu Ms Rt
Specificity	Phospho-PKC $\alpha$ (T638) Polyclonal Antibody detects endogenous levels of PKC $\alpha$ protein only when phosphorylated at T638.
Immunogen Type	peptide
Immunogen Description	Synthesized peptide derived from human PKC $\alpha$ around the phosphorylation site of T638.
Target Name	PKC $\alpha$
Modification	Phospho-Thr638
Other Names	PRKCA; PKCA; PRKACA; Protein kinase C alpha type; PKC-A; PKC-alpha
Accession No.	Swiss-Prot: P17252NCBI Gene ID: 5578
Target Species	human
SDS-PAGE MW	76kd
Concentration	1mg/ml
Formulation	Liquid in PBS containing 50% glycerol, 0.5% BSA and 0.02% sodium azide.
Storage	Store at -20°C/1 year

## Application Details

Western blotting: 1/500 - 1/2000

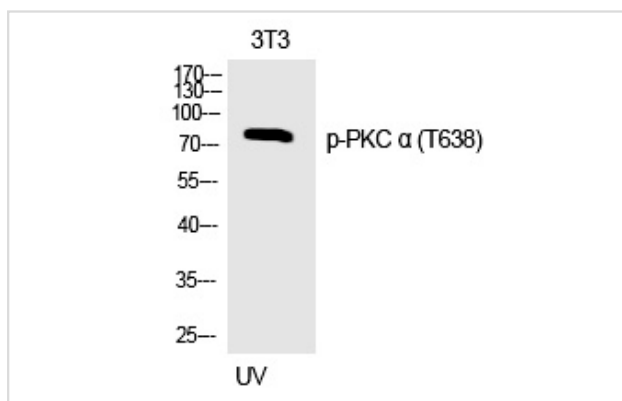
Immunohistochemistry: 1/100 - 1/300

ELISA: 1/20000

Not yet tested in other applications

## Images

Western Blot analysis of 3T3 cells using Phospho-PKC  $\alpha$  (T638) Polyclonal Antibody



Note: This product is for in vitro research use only and is not intended for use in humans or animals.