

## DOR-1 (Phospho-Ser363) Polyclonal Antibody

Catalog No: #12298



Package Size: #12298-1 50ul #12298-2 100ul

Orders: [order@signalwayantibody.com](mailto:order@signalwayantibody.com)Support: [tech@signalwayantibody.com](mailto:tech@signalwayantibody.com)

## Description

Product Name	DOR-1 (Phospho-Ser363) Polyclonal Antibody
Host Species	Rabbit
Clonality	Polyclonal
Purification	The antibody was affinity-purified from rabbit antiserum by affinity-chromatography using epitope-specific immunogen.
Applications	WB IHC ELISA
Species Reactivity	Hu Ms Rt
Specificity	Phospho-DOR-1 (S363) Polyclonal Antibody detects endogenous levels of DOR-1 protein only when phosphorylated at S363.
Immunogen Type	peptide
Immunogen Description	Synthesized peptide derived from human DOR-1 around the phosphorylation site of S363.
Target Name	DOR-1
Modification	Phospho-Ser363
Other Names	OPRD1; OPRD; Delta-type opioid receptor; D-OR-1; DOR-1
Accession No.	Swiss-Prot: P41143NCBI Gene ID: 4985
Target Species	human
SDS-PAGE MW	36kd
Concentration	1mg/ml
Formulation	Liquid in PBS containing 50% glycerol, 0.5% BSA and 0.02% sodium azide.
Storage	Store at -20°C/1 year

## Application Details

Western blotting: 1/500 - 1/2000

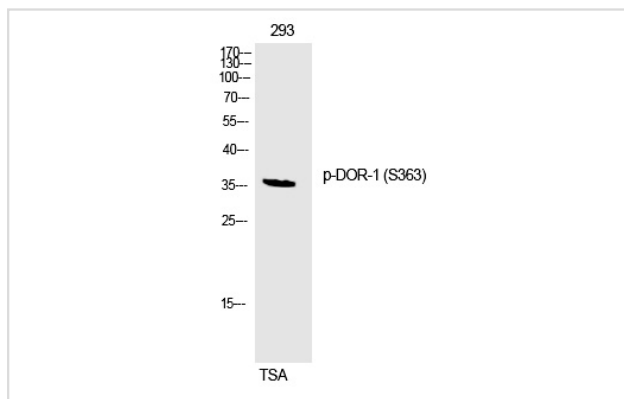
Immunohistochemistry: 1/100 - 1/300

ELISA: 1/5000

Not yet tested in other applications

## Images

Western Blot analysis of 293 cells using Phospho-DOR-1 (S363) Polyclonal Antibody



Note: This product is for in vitro research use only and is not intended for use in humans or animals.