

## Lyn (Phospho-Tyr508) Polyclonal Antibody

Catalog No: #12289



Package Size: #12289-1 50ul #12289-2 100ul

Orders: [order@signalwayantibody.com](mailto:order@signalwayantibody.com)Support: [tech@signalwayantibody.com](mailto:tech@signalwayantibody.com)

## Description

Product Name	Lyn (Phospho-Tyr508) Polyclonal Antibody
Host Species	Rabbit
Clonality	Polyclonal
Purification	The antibody was affinity-purified from rabbit antiserum by affinity-chromatography using epitope-specific immunogen.
Applications	WB IHC ELISA
Species Reactivity	Hu Ms Rt
Specificity	Phospho-Lyn (Y508) Polyclonal Antibody detects endogenous levels of Lyn protein only when phosphorylated at Y508.
Immunogen Type	peptide
Immunogen Description	Synthesized peptide derived from human Lyn around the phosphorylation site of Y508.
Target Name	Lyn
Modification	Phospho-Tyr508
Other Names	LYN; JTK8; Tyrosine-protein kinase Lyn; Lck/Yes-related novel protein tyrosine kinase; V-yes-1 Yamaguchi sarcoma viral related oncogene homolog; p53Lyn; p56Lyn
Accession No.	Swiss-Prot: P07948NCBI Gene ID: 4067
Target Species	human
SDS-PAGE MW	58kd
Concentration	1mg/ml
Formulation	Liquid in PBS containing 50% glycerol, 0.5% BSA and 0.02% sodium azide.
Storage	Store at -20°C/1 year

## Application Details

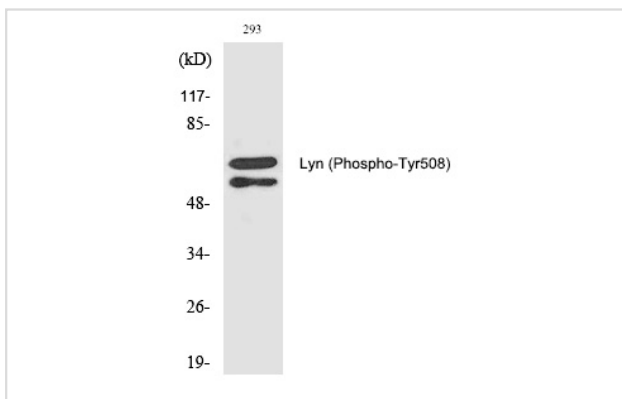
Western blotting: 1/500 - 1/2000

Immunohistochemistry: 1/100 - 1/300

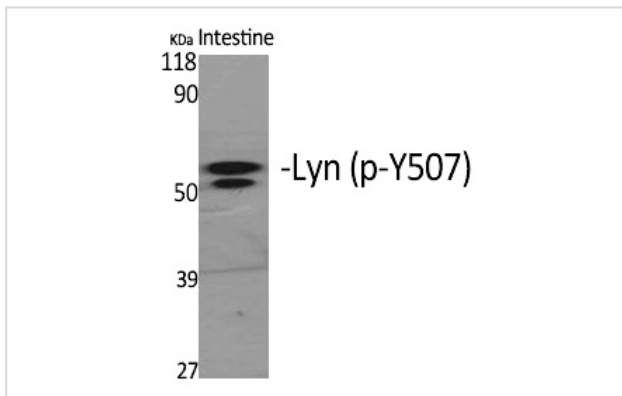
ELISA: 1/10000

Not yet tested in other applications

## Images



Western Blot analysis of 293 cells using Phospho-Lyn (Y508) Polyclonal Antibody



Western Blot analysis of MOUSE-INTESTINE cells using Phospho-Lyn (Y508) Polyclonal Antibody

---

Note: This product is for in vitro research use only and is not intended for use in humans or animals.