

## HSL (Phospho-Ser855) Polyclonal Antibody

Catalog No: #12287



Package Size: #12287-1 50ul #12287-2 100ul

Orders: [order@signalwayantibody.com](mailto:order@signalwayantibody.com)Support: [tech@signalwayantibody.com](mailto:tech@signalwayantibody.com)

## Description

Product Name	HSL (Phospho-Ser855) Polyclonal Antibody
Host Species	Rabbit
Clonality	Polyclonal
Purification	The antibody was affinity-purified from rabbit antiserum by affinity-chromatography using epitope-specific immunogen.
Applications	WB IHC ELISA
Species Reactivity	Hu Ms Rt
Specificity	Phospho-HSL (S855) Polyclonal Antibody detects endogenous levels of HSL protein only when phosphorylated at S855.
Immunogen Type	peptide
Immunogen Description	Synthesized peptide derived from human HSL around the phosphorylation site of S855.
Target Name	HSL
Modification	Phospho-Ser855
Other Names	LIPE; Hormone-sensitive lipase; HSL
Accession No.	Swiss-Prot: Q05469NCBI Gene ID: 3991
Target Species	human
SDS-PAGE MW	83kd
Concentration	1mg/ml
Formulation	Liquid in PBS containing 50% glycerol, 0.5% BSA and 0.02% sodium azide.
Storage	Store at -20°C/1 year

## Application Details

Western blotting: 1/500 - 1/2000

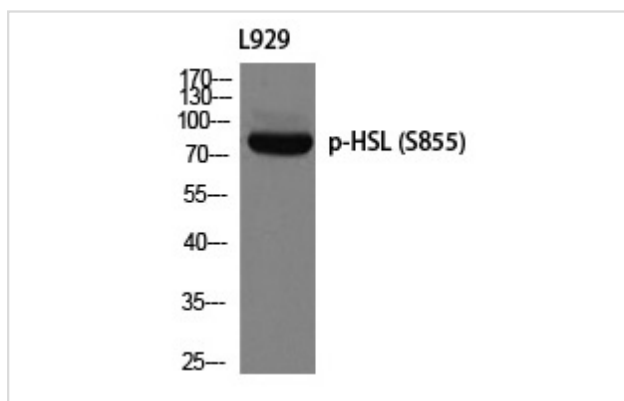
Immunohistochemistry: 1/100 - 1/300

ELISA: 1/20000

Not yet tested in other applications

## Images

Western blot analysis of L929 using p-HSL (S855) antibody.



---

Note: This product is for in vitro research use only and is not intended for use in humans or animals.