

# Filamin 1 (Phospho-Ser2152) Polyclonal Antibody

Catalog No: #12286

Package Size: #12286-1 50ul #12286-2 100ul

Orders: [order@signalwayantibody.com](mailto:order@signalwayantibody.com)Support: [tech@signalwayantibody.com](mailto:tech@signalwayantibody.com)

## Description

Product Name	Filamin 1 (Phospho-Ser2152) Polyclonal Antibody
Host Species	Rabbit
Clonality	Polyclonal
Purification	The antibody was affinity-purified from rabbit antiserum by affinity-chromatography using epitope-specific immunogen.
Applications	WB IHC ELISA
Species Reactivity	Hu Ms Rt Mk
Specificity	Phospho-Filamin 1 (S2152) Polyclonal Antibody detects endogenous levels of Filamin 1 protein only when phosphorylated at S2152.
Immunogen Type	peptide
Immunogen Description	Synthesized peptide derived from human Filamin 1 around the phosphorylation site of S2152.
Target Name	Filamin 1
Modification	Phospho-Ser2152
Other Names	FLNA; FLN; FLN1; Filamin-A; FLN-A; Actin-binding protein 280; ABP-280; Alpha-filamin; Endothelial actin-binding protein; Filamin-1; Non-muscle filamin
Accession No.	Swiss-Prot: P21333NCBI Gene ID: 2316
Target Species	human
SDS-PAGE MW	280kd
Concentration	1mg/ml
Formulation	Liquid in PBS containing 50% glycerol, 0.5% BSA and 0.02% sodium azide.
Storage	Store at -20°C/1 year

## Application Details

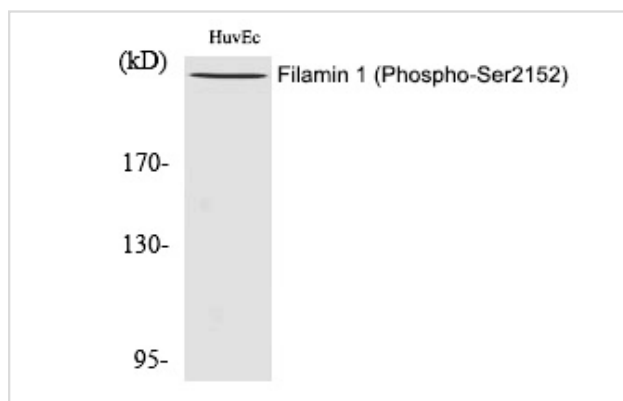
Western blotting: 1/500 - 1/2000

Immunohistochemistry: 1/100 - 1/300

ELISA: 1/10000

Not yet tested in other applications

## Images



Western Blot analysis of HuvEc cells using Phospho-Filamin 1 (S2152) Polyclonal Antibody

Note: This product is for in vitro research use only and is not intended for use in humans or animals.