

TH (Phospho-Ser62) Polyclonal Antibody

Catalog No: #12282



Package Size: #12282-1 50ul #12282-2 100ul

Orders: order@signalwayantibody.comSupport: tech@signalwayantibody.com

Description

| | |
|-----------------------|-----------------------------------------------------------------------------------------------------------------------|
| Product Name | TH (Phospho-Ser62) Polyclonal Antibody |
| Host Species | Rabbit |
| Clonality | Polyclonal |
| Purification | The antibody was affinity-purified from rabbit antiserum by affinity-chromatography using epitope-specific immunogen. |
| Applications | WB IHC ELISA |
| Species Reactivity | Hu Ms Rt Mk |
| Specificity | Phospho-TH (S62) Polyclonal Antibody detects endogenous levels of TH protein only when phosphorylated at S62. |
| Immunogen Type | peptide |
| Immunogen Description | Synthesized peptide derived from human TH around the phosphorylation site of S62. |
| Target Name | TH |
| Modification | Phospho-Ser62 |
| Other Names | TH; TYH; Tyrosine 3-monooxygenase; Tyrosine 3-hydroxylase; TH |
| Accession No. | Swiss-Prot: P07101NCBI Gene ID: 7054 |
| Target Species | human |
| SDS-PAGE MW | 60kd |
| Concentration | 1mg/ml |
| Formulation | Liquid in PBS containing 50% glycerol, 0.5% BSA and 0.02% sodium azide. |
| Storage | Store at -20°C/1 year |

Application Details

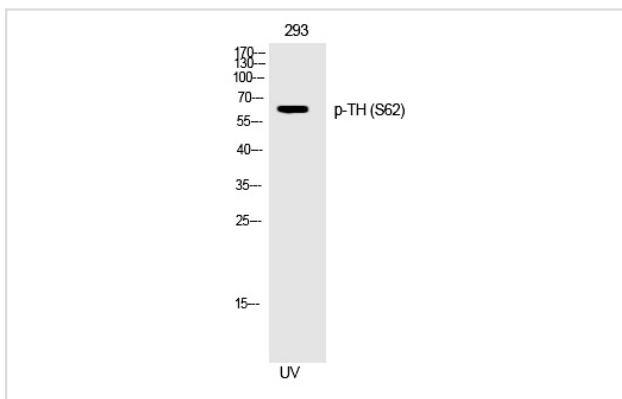
Western blotting: 1/500 - 1/2000

Immunohistochemistry: 1/100 - 1/300

ELISA: 1/5000

Not yet tested in other applications

Images



Western Blot analysis of 293 cells using Phospho-TH (S62) Polyclonal Antibody

Note: This product is for in vitro research use only and is not intended for use in humans or animals.