

## TRF1 (Phospho-Ser219) Polyclonal Antibody

Catalog No: #12251



Package Size: #12251-1 50ul #12251-2 100ul

Orders: [order@signalwayantibody.com](mailto:order@signalwayantibody.com)Support: [tech@signalwayantibody.com](mailto:tech@signalwayantibody.com)

## Description

Product Name	TRF1 (Phospho-Ser219) Polyclonal Antibody
Host Species	Rabbit
Clonality	Polyclonal
Purification	The antibody was affinity-purified from rabbit antiserum by affinity-chromatography using epitope-specific immunogen.
Applications	WB ELISA
Species Reactivity	Hu Ms
Specificity	Phospho-TRF1 (S219) Polyclonal Antibody detects endogenous levels of TRF1 protein only when phosphorylated at S219.
Immunogen Type	peptide
Immunogen Description	Synthesized peptide derived from human TRF1 around the phosphorylation site of S219.
Target Name	TRF1
Modification	Phospho-Ser219
Other Names	TERF1; PIN2; TRBF1; TRF; TRF1; Telomeric repeat-binding factor 1; NIMA-interacting protein 2; TTAGGG repeat-binding factor 1; Telomeric protein Pin2/TRF1
Accession No.	Swiss-Prot: P54274NCBI Gene ID: 7013
Target Species	human
SDS-PAGE MW	55kd
Concentration	1mg/ml
Formulation	Liquid in PBS containing 50% glycerol, 0.5% BSA and 0.02% sodium azide.
Storage	Store at -20°C/1 year

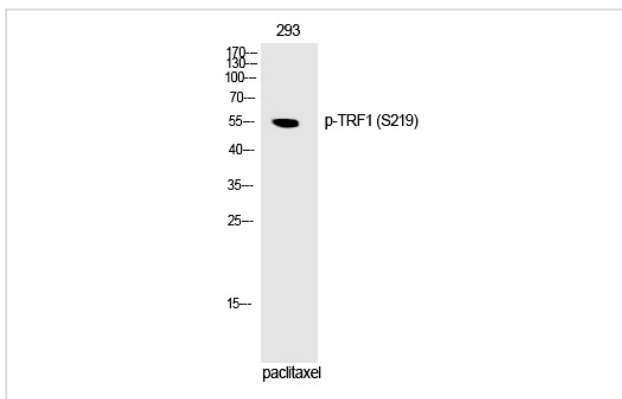
## Application Details

Western blotting: 1/500 - 1/2000

ELISA: 1/5000

Not yet tested in other applications

## Images



Western Blot analysis of 293 cells using Phospho-TRF1 (S219) Polyclonal Antibody

Note: This product is for in vitro research use only and is not intended for use in humans or animals.