

Met (Phospho-Tyr1356) Polyclonal Antibody

Catalog No: #12230



Package Size: #12230-1 50ul #12230-2 100ul

Orders: order@signalwayantibody.comSupport: tech@signalwayantibody.com

Description

Product Name	Met (Phospho-Tyr1356) Polyclonal Antibody
Host Species	Rabbit
Clonality	Polyclonal
Purification	The antibody was affinity-purified from rabbit antiserum by affinity-chromatography using epitope-specific immunogen.
Applications	WB ELISA
Species Reactivity	Hu Ms Rt
Specificity	Phospho-Met (Y1356) Polyclonal Antibody detects endogenous levels of Met protein only when phosphorylated at Y1356.
Immunogen Type	peptide
Immunogen Description	Synthesized peptide derived from human Met around the phosphorylation site of Y1356.
Target Name	Met
Modification	Phospho-Tyr1356
Other Names	MET; Hepatocyte growth factor receptor; HGF receptor; HGF/SF receptor; Proto-oncogene c-Met; Scatter factor receptor; SF receptor; Tyrosine-protein kinase Met
Accession No.	Swiss-Prot: P08581NCBI Gene ID: 4233
Target Species	human
SDS-PAGE MW	160kd
Concentration	1mg/ml
Formulation	Liquid in PBS containing 50% glycerol, 0.5% BSA and 0.02% sodium azide.
Storage	Store at -20°C/1 year

Application Details

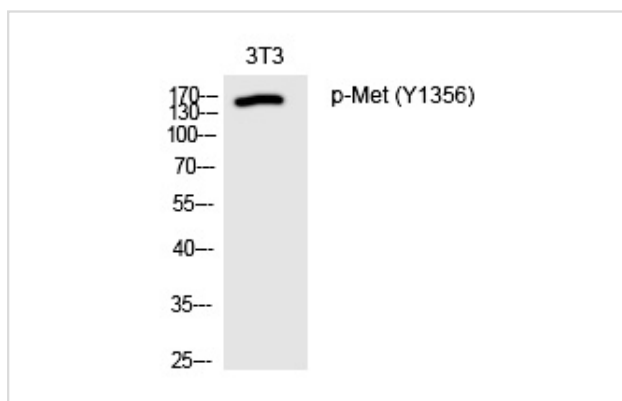
Western blotting: 1/500 - 1/2000

ELISA: 1/10000

Not yet tested in other applications

Images

Western Blot analysis of 3T3 cells using Phospho-Met (Y1356) Polyclonal Antibody



Note: This product is for in vitro research use only and is not intended for use in humans or animals.