

PKC  $\delta$  (Phospho-Thr507) Polyclonal Antibody

Catalog No: #12218



Package Size: #12218-1 50ul #12218-2 100ul

Orders: [order@signalwayantibody.com](mailto:order@signalwayantibody.com)Support: [tech@signalwayantibody.com](mailto:tech@signalwayantibody.com)

## Description

Product Name	PKC $\delta$ (Phospho-Thr507) Polyclonal Antibody
Host Species	Rabbit
Clonality	Polyclonal
Purification	The antibody was affinity-purified from rabbit antiserum by affinity-chromatography using epitope-specific immunogen.
Applications	WB IHC ELISA
Species Reactivity	Hu Ms Rt
Specificity	Phospho-PKC $\delta$ (T507) Polyclonal Antibody detects endogenous levels of PKC $\delta$ protein only when phosphorylated at T507.
Immunogen Type	peptide
Immunogen Description	Synthesized peptide derived from human PKC $\delta$ around the phosphorylation site of T507.
Target Name	PKC $\delta$
Modification	Phospho-Thr507
Other Names	PRKCD; Protein kinase C delta type; Tyrosine-protein kinase PRKCD; nPKC-delta
Accession No.	Swiss-Prot: Q05655NCBI Gene ID: 5580
Target Species	human
SDS-PAGE MW	78kd
Concentration	1mg/ml
Formulation	Liquid in PBS containing 50% glycerol, 0.5% BSA and 0.02% sodium azide.
Storage	Store at -20°C/1 year

## Application Details

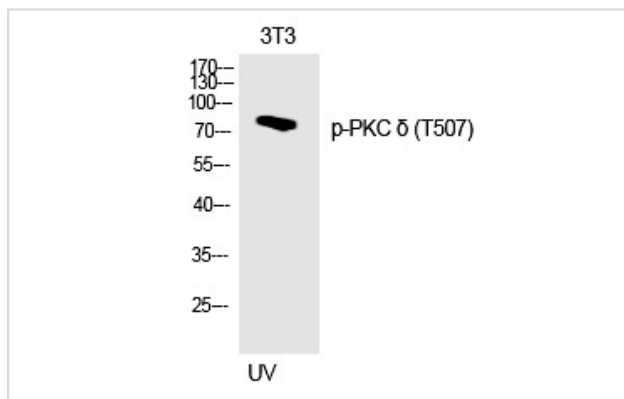
Western blotting: 1/500 - 1/2000

Immunohistochemistry: 1/100 - 1/300

ELISA: 1/20000

Not yet tested in other applications

## Images



Western Blot analysis of 3T3 cells using Phospho-PKC  $\delta$  (T507) Polyclonal Antibody

Note: This product is for in vitro research use only and is not intended for use in humans or animals.