

## Neu (Phospho-Tyr1248) Polyclonal Antibody

Catalog No: #12210



Package Size: #12210-1 50ul #12210-2 100ul

Orders: [order@signalwayantibody.com](mailto:order@signalwayantibody.com)Support: [tech@signalwayantibody.com](mailto:tech@signalwayantibody.com)

## Description

Product Name	Neu (Phospho-Tyr1248) Polyclonal Antibody
Host Species	Rabbit
Clonality	Polyclonal
Purification	The antibody was affinity-purified from rabbit antiserum by affinity-chromatography using epitope-specific immunogen.
Applications	WB IHC ELISA
Species Reactivity	Hu Ms Rt
Specificity	Phospho-Neu (Y1248) Polyclonal Antibody detects endogenous levels of Neu protein only when phosphorylated at Y1248.
Immunogen Type	peptide
Immunogen Description	Synthesized peptide derived from human Neu around the phosphorylation site of Y1248.
Target Name	Neu
Modification	Phospho-Tyr1248
Other Names	ERBB2; HER2; MLN19; NEU; NGL; Receptor tyrosine-protein kinase erbB-2; Metastatic lymph node gene 19 protein; MLN 19; Proto-oncogene Neu; Proto-oncogene c-ErbB-2; Tyrosine kinase-type cell surface receptor HER2; p185erbB2; CD antigen CD340
Accession No.	Swiss-Prot: P04626NCBI Gene ID: 2064
Target Species	human
SDS-PAGE MW	150kd
Concentration	1mg/ml
Formulation	Liquid in PBS containing 50% glycerol, 0.5% BSA and 0.02% sodium azide.
Storage	Store at -20°C/1 year

## Application Details

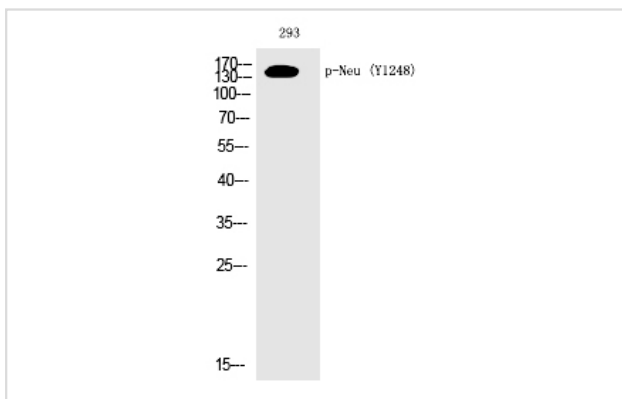
Western blotting: 1/500 - 1/2000

Immunohistochemistry: 1/100 - 1/300

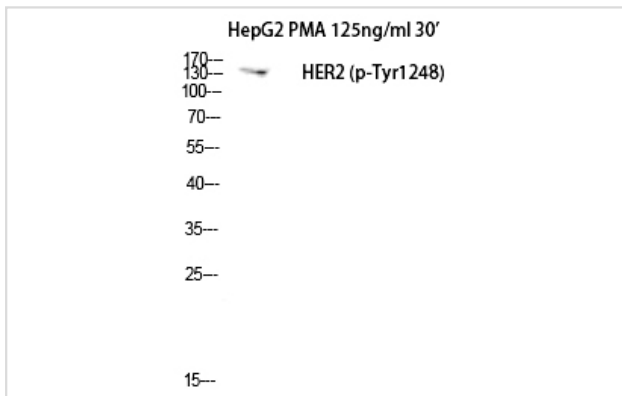
ELISA: 1/20000

Not yet tested in other applications

## Images



Western Blot analysis of 293 cells using Phospho-Neu (Y1248) Polyclonal Antibody



Western Blot analysis of HepG2+PMA cells using Phospho-Neu (Y1248) Polyclonal Antibody

---

Note: This product is for in vitro research use only and is not intended for use in humans or animals.