

Neu (Phospho-Tyr1221/Tyr1222) Polyclonal Antibody

Catalog No: #12209



Package Size: #12209-1 50ul #12209-2 100ul

Orders: order@signalwayantibody.comSupport: tech@signalwayantibody.com

Description

Product Name	Neu (Phospho-Tyr1221/Tyr1222) Polyclonal Antibody
Host Species	Rabbit
Clonality	Polyclonal
Purification	The antibody was affinity-purified from rabbit antiserum by affinity-chromatography using epitope-specific immunogen.
Applications	WB IHC IP ELISA
Species Reactivity	Hu Ms Rt
Specificity	Phospho-Neu (Y1221/Y1222) Polyclonal Antibody detects endogenous levels of Neu protein only when phosphorylated at Y1221/Y1222.
Immunogen Type	peptide
Immunogen Description	Synthesized peptide derived from human Neu around the phosphorylation site of Y1221/Y1222.
Target Name	Neu
Modification	Phospho-Tyr1221/Tyr1222
Other Names	ERBB2; HER2; MLN19; NEU; NGL; Receptor tyrosine-protein kinase erbB-2; Metastatic lymph node gene 19 protein; MLN 19; Proto-oncogene Neu; Proto-oncogene c-ErbB-2; Tyrosine kinase-type cell surface receptor HER2; p185erbB2; CD antigen CD340
Accession No.	Swiss-Prot: P04626NCBI Gene ID: 2064
Target Species	human
SDS-PAGE MW	150-170kd
Concentration	1mg/ml
Formulation	Liquid in PBS containing 50% glycerol, 0.5% BSA and 0.02% sodium azide.
Storage	Store at -20°C/1 year

Application Details

Western blotting: 1/500 - 1/2000

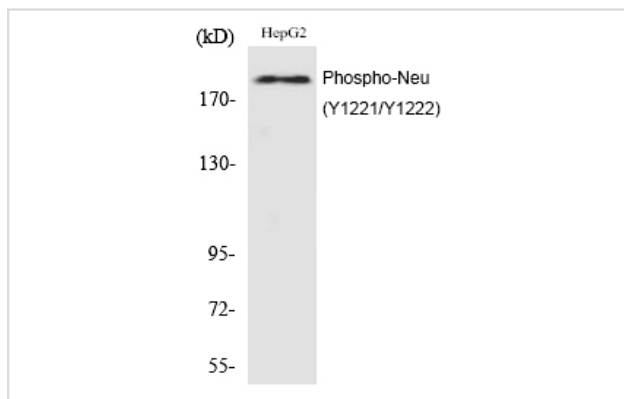
Immunohistochemistry: 1/100 - 1/300

Immunoprecipitation: 2-5 ug/mg lysate

ELISA: 1/20000

Not yet tested in other applications

Images



Western Blot analysis of HepG2 cells using Phospho-Neu (Y1221/Y1222) Polyclonal Antibody

Note: This product is for in vitro research use only and is not intended for use in humans or animals.