

# Ezrin (Phospho-Thr566) Polyclonal Antibody

Catalog No: #12195

Package Size: #12195-1 50ul #12195-2 100ul

Orders: [order@signalwayantibody.com](mailto:order@signalwayantibody.com)Support: [tech@signalwayantibody.com](mailto:tech@signalwayantibody.com)

## Description

Product Name	Ezrin (Phospho-Thr566) Polyclonal Antibody
Host Species	Rabbit
Clonality	Polyclonal
Purification	The antibody was affinity-purified from rabbit antiserum by affinity-chromatography using epitope-specific immunogen.
Applications	WB ELISA
Species Reactivity	Hu Ms Rt
Specificity	Phospho-Ezrin (T566) Polyclonal Antibody detects endogenous levels of Ezrin protein only when phosphorylated at T566.
Immunogen Type	peptide
Immunogen Description	Synthesized peptide derived from human Ezrin around the phosphorylation site of T566.
Target Name	Ezrin
Modification	Phospho-Thr566
Other Names	EZR; VIL2; Ezrin; Cytovillin; Villin-2; p81
Accession No.	Swiss-Prot: P15311NCBI Gene ID: 7430
Target Species	human
SDS-PAGE MW	69kd
Concentration	1mg/ml
Formulation	Liquid in PBS containing 50% glycerol, 0.5% BSA and 0.02% sodium azide.
Storage	Store at -20°C/1 year

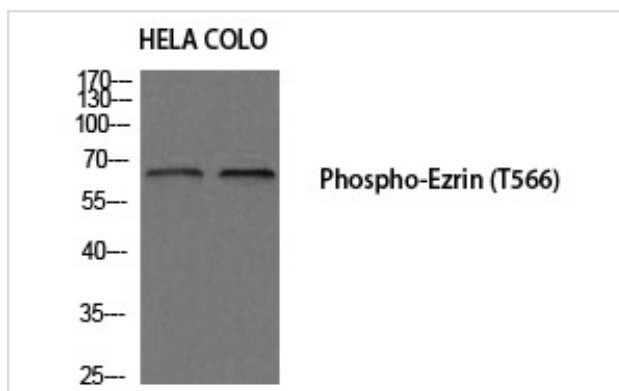
## Application Details

Western blotting: 1/500 - 1/2000

ELISA: 1/20000

Not yet tested in other applications

## Images



Western blot analysis of HELA COLO using Phospho-Ezrin (T566) antibody.

---

Note: This product is for in vitro research use only and is not intended for use in humans or animals.