

## Erbin (Phospho-Tyr1104) Polyclonal Antibody

Catalog No: #12194



Package Size: #12194-1 50ul #12194-2 100ul

Orders: [order@signalwayantibody.com](mailto:order@signalwayantibody.com)Support: [tech@signalwayantibody.com](mailto:tech@signalwayantibody.com)

## Description

Product Name	Erbin (Phospho-Tyr1104) Polyclonal Antibody
Host Species	Rabbit
Clonality	Polyclonal
Purification	The antibody was affinity-purified from rabbit antiserum by affinity-chromatography using epitope-specific immunogen.
Applications	WB ELISA
Species Reactivity	Hu
Specificity	Phospho-Erbin (Y1104) Polyclonal Antibody detects endogenous levels of Erbin protein only when phosphorylated at Y1104.
Immunogen Type	peptide
Immunogen Description	Synthesized peptide derived from human Erbin around the phosphorylation site of Y1104.
Target Name	Erbin
Modification	Phospho-Tyr1104
Other Names	ERBB2IP; ERBIN; KIAA1225; LAP2; Protein LAP2; Densin-180-like protein; ErbB2-interacting protein; Erbin
Accession No.	Swiss-Prot: Q96RT1NCBI Gene ID: 55914
Target Species	human
SDS-PAGE MW	172kd
Concentration	1mg/ml
Formulation	Liquid in PBS containing 50% glycerol, 0.5% BSA and 0.02% sodium azide.
Storage	Store at -20°C/1 year

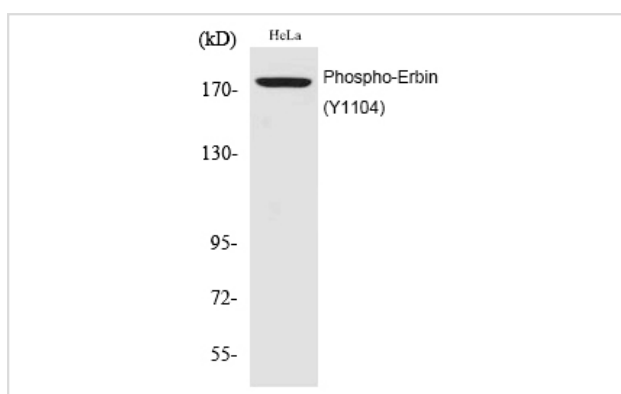
## Application Details

Western blotting: 1/500 - 1/2000

ELISA: 1/10000

Not yet tested in other applications

## Images



Western Blot analysis of HeLa cells using Phospho-Erbin (Y1104) Polyclonal Antibody

---

Note: This product is for in vitro research use only and is not intended for use in humans or animals.