

## Cortactin (Phospho-Tyr421) Polyclonal Antibody

Catalog No: #12192



Package Size: #12192-1 50ul #12192-2 100ul

Orders: [order@signalwayantibody.com](mailto:order@signalwayantibody.com)Support: [tech@signalwayantibody.com](mailto:tech@signalwayantibody.com)

## Description

Product Name	Cortactin (Phospho-Tyr421) Polyclonal Antibody
Host Species	Rabbit
Clonality	Polyclonal
Purification	The antibody was affinity-purified from rabbit antiserum by affinity-chromatography using epitope-specific immunogen.
Applications	WB IHC ELISA
Species Reactivity	Hu Ms Rt
Specificity	Phospho-Cortactin (Y421) Polyclonal Antibody detects endogenous levels of Cortactin protein only when phosphorylated at Y421.
Immunogen Type	peptide
Immunogen Description	Synthesized peptide derived from human Cortactin around the phosphorylation site of Y421.
Target Name	Cortactin
Modification	Phospho-Tyr421
Other Names	CTTN; EMS1; Src substrate cortactin; Amplexin; Oncogene EMS1
Accession No.	Swiss-Prot: Q14247NCBI Gene ID: 2017
Target Species	human
SDS-PAGE MW	85kd
Concentration	1mg/ml
Formulation	Liquid in PBS containing 50% glycerol, 0.5% BSA and 0.02% sodium azide.
Storage	Store at -20°C/1 year

## Application Details

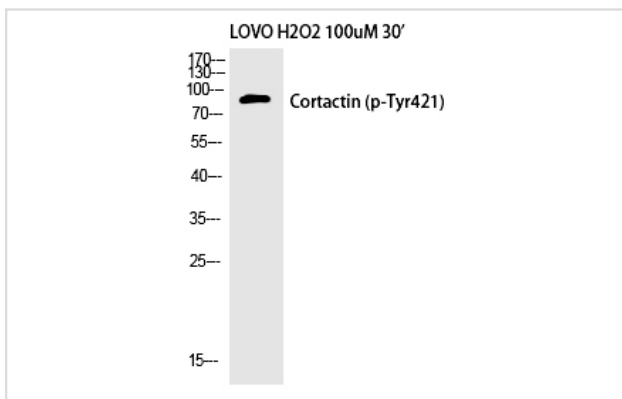
Western blotting: 1/500 - 1/2000

Immunohistochemistry: 1/100 - 1/300

ELISA: 1/20000

Not yet tested in other applications

## Images



Western Blot analysis of LOVO+H2O2 cells using Phospho-Cortactin (Y421) Polyclonal Antibody

---

Note: This product is for in vitro research use only and is not intended for use in humans or animals.