

## Caspase-6 (Phospho-Ser257) Polyclonal Antibody

Catalog No: #12187



Package Size: #12187-1 50ul #12187-2 100ul

Orders: [order@signalwayantibody.com](mailto:order@signalwayantibody.com)Support: [tech@signalwayantibody.com](mailto:tech@signalwayantibody.com)

## Description

|                       |   |
|-----------------------|---|
| Product Name          | Caspase-6 (Phospho-Ser257) Polyclonal Antibody  |
| Host Species          | Rabbit  |
| Clonality             | Polyclonal  |
| Purification          | The antibody was affinity-purified from rabbit antiserum by affinity-chromatography using epitope-specific immunogen.         |
| Applications          | WB IHC IF ELISA   |
| Species Reactivity    | Hu Ms Rt  |
| Specificity           | Phospho-Caspase-6 (S257) Polyclonal Antibody detects endogenous levels of Caspase-6 protein only when phosphorylated at S257. |
| Immunogen Type        | peptide   |
| Immunogen Description | Synthesized peptide derived from human Caspase-6 around the phosphorylation site of S257.                                     |
| Target Name           | Caspase-6   |
| Modification          | Phospho-Ser257  |
| Other Names           | CASP6; MCH2; Caspase-6; CASP-6; Apoptotic protease Mch-2  |
| Accession No.         | Swiss-Prot: P55212NCBI Gene ID: 839   |
| Target Species        | human   |
| SDS-PAGE MW           | 33kd  |
| Concentration         | 1mg/ml  |
| Formulation           | Liquid in PBS containing 50% glycerol, 0.5% BSA and 0.02% sodium azide.   |
| Storage               | Store at -20°C/1 year   |

## Application Details

Western blotting: 1/500 - 1/2000

Immunohistochemistry: 1/100 - 1/300

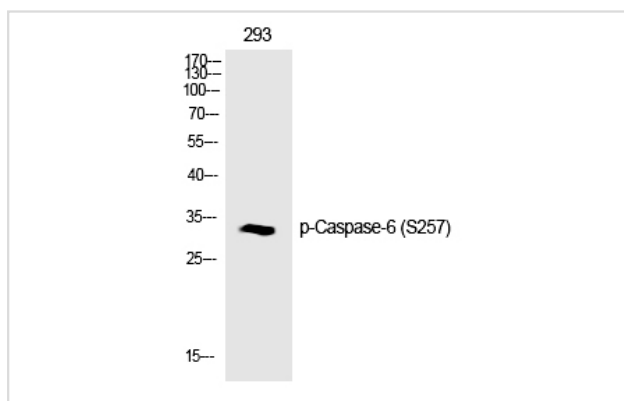
Immunofluorescence: 1/200 - 1/1000

ELISA: 1/20000

Not yet tested in other applications

## Images

Western Blot analysis of Jurkat cells using Phospho-Caspase-6 (S257) Polyclonal Antibody



---

Note: This product is for in vitro research use only and is not intended for use in humans or animals.