

## Calnexin (Phospho-Ser583) Polyclonal Antibody

Catalog No: #12186



Package Size: #12186-1 50ul #12186-2 100ul

Orders: [order@signalwayantibody.com](mailto:order@signalwayantibody.com)Support: [tech@signalwayantibody.com](mailto:tech@signalwayantibody.com)

## Description

Product Name	Calnexin (Phospho-Ser583) Polyclonal Antibody
Host Species	Rabbit
Clonality	Polyclonal
Purification	The antibody was affinity-purified from rabbit antiserum by affinity-chromatography using epitope-specific immunogen.
Applications	WB IHC IF ELISA
Species Reactivity	Hu Ms Rt
Specificity	Phospho-Calnexin (S583) Polyclonal Antibody detects endogenous levels of Calnexin protein only when phosphorylated at S583.
Immunogen Type	peptide
Immunogen Description	Synthesized peptide derived from human Calnexin around the phosphorylation site of S583.
Target Name	Calnexin
Modification	Phospho-Ser583
Other Names	CANX; Calnexin; IP90; Major histocompatibility complex class I antigen-binding protein p88; p90
Accession No.	Swiss-Prot: P27824NCBI Gene ID: 821
Target Species	human
SDS-PAGE MW	90kd
Concentration	1mg/ml
Formulation	Liquid in PBS containing 50% glycerol, 0.5% BSA and 0.02% sodium azide.
Storage	Store at -20°C/1 year

## Application Details

Western blotting: 1/500 - 1/2000

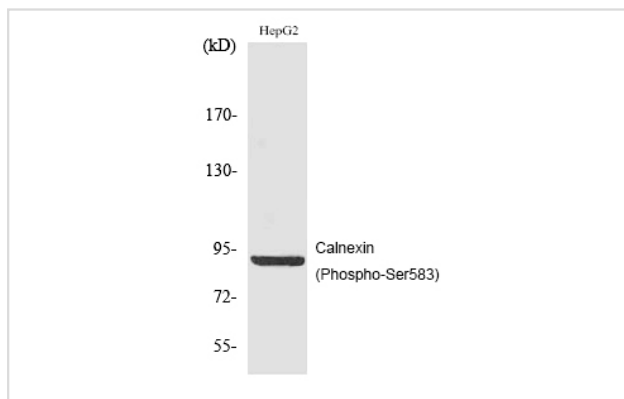
Immunohistochemistry: 1/100 - 1/300

Immunofluorescence: 1/200 - 1/1000

ELISA: 1/5000

Not yet tested in other applications

## Images



Western Blot analysis of HepG2 cells using Phospho-Calnexin (S583) Polyclonal Antibody

---

Note: This product is for in vitro research use only and is not intended for use in humans or animals.