

## PEPC (Phospho-Ser15) Polyclonal Antibody

Catalog No: #12178



Package Size: #12178-1 50ul #12178-2 100ul

Orders: [order@signalwayantibody.com](mailto:order@signalwayantibody.com)Support: [tech@signalwayantibody.com](mailto:tech@signalwayantibody.com)

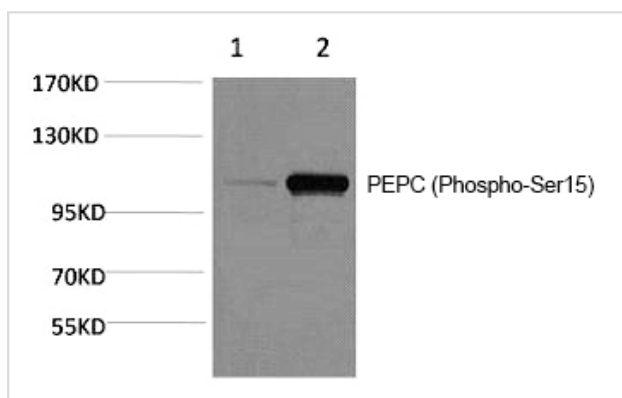
## Description

Product Name	PEPC (Phospho-Ser15) Polyclonal Antibody
Host Species	Rabbit
Clonality	Polyclonal
Purification	The antibody was affinity-purified from antiserum by affinity-chromatography
Applications	WB
Species Reactivity	Plants
Specificity	The antibody detects endogenous PEPC (Phospho Ser15) protein.
Immunogen Type	peptide
Immunogen Description	Phospho peptide at Ser15 of PEPC
Target Name	PEPC
Modification	Phospho-Ser15
Other Names	PGC; Gastricsin; Pepsinogen C
Accession No.	Swiss-Prot: P20142NCBI Gene ID: 5225
SDS-PAGE MW	105-110kd
Concentration	1mg/ml
Formulation	PBS, pH 7.4, containing 0.02% sodium azide as Preservative and 50% Glycerol.
Storage	Store at -20°C/1 year

## Application Details

Western blotting: 1:1000-2000

## Images



Western blot analysis of Maize 1) Dark, 2) Light, diluted at 1:2000.

Note: This product is for in vitro research use only and is not intended for use in humans or animals.