

## UBF (Phospho-Ser484) Antibody

Catalog No: #12154



Package Size: #12154-1 50ul #12154-2 100ul

Orders: order@signalwayantibody.com

Support: tech@signalwayantibody.com

## Description

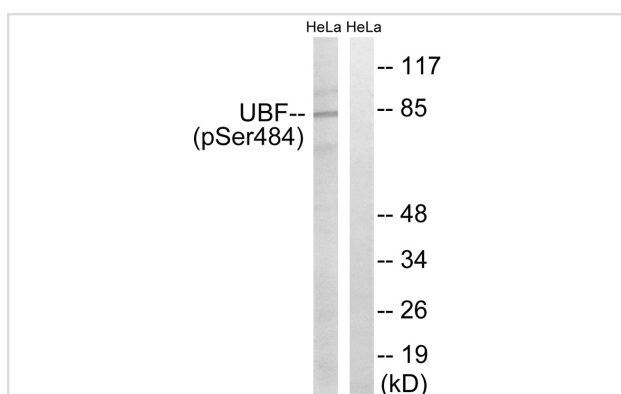
Product Name	UBF (Phospho-Ser484) Antibody
Host Species	Rabbit
Clonality	Polyclonal
Purification	Antibodies were produced by immunizing rabbits with synthetic phosphopeptide and KLH conjugates. Antibodies were purified by affinity-chromatography using epitope-specific phosphopeptide. Non-phospho specific antibodies were removed by chromatography using non-phosphopeptide.
Applications	WB IHC
Species Reactivity	Hu Ms Rt
Specificity	The antibody detects endogenous levels of UBF only when phosphorylated at serine 484.
Immunogen Type	peptide
Immunogen Description	Peptide sequence around phosphorylation site of serine 484 (P-E-S(p)-P-K) derived from Human UBF.
Target Name	UBF
Modification	Phospho-Ser484
Other Names	Autoantigen NOR-90; Nucleolar transcription factor 1; TCFUBF; UBF-1; UBF1; UBTF; Upstream binding factor 1
Accession No.	Swiss-Prot#:P17480;NCBI Gene#:7343
SDS-PAGE MW	85kd
Concentration	1.0mg/ml
Formulation	Rabbit IgG in phosphate buffered saline (without Mg <sup>2+</sup> and Ca <sup>2+</sup> ), pH 7.4, 150mM NaCl, 0.02% sodium azide and 50% glycerol.
Storage	Store at -20°C

## Application Details

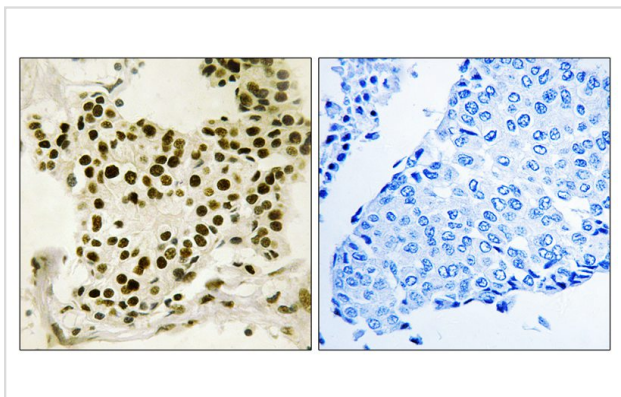
Western blotting: 1:500~1:3000

Immunohistochemistry: 1:50~1:100

## Images



Western blot analysis of extracts from HeLa cells, treated with calyculinA (50ng/ml, 30mins), using UBF (Phospho-Ser484) antibody #12154. The lane on the right is treated with the synthesized peptide.



Immunohistochemistry analysis of paraffin-embedded human breast carcinoma tissue using UBF (Phospho-Ser484) antibody #12154. The picture on the right is treated with the synthesized peptide.

## Background

Recognizes the ribosomal RNA gene promoter and activates transcription mediated by RNA polymerase I through cooperative interactions with the transcription factor SL1/TIF-IB complex. It binds specifically to the upstream control element.

Note: This product is for in vitro research use only and is not intended for use in humans or animals.