

Myb (Phospho-Ser532) Antibody

Catalog No: #12145

Package Size: #12145-1 50ul #12145-2 100ul

Orders: order@signalwayantibody.comSupport: tech@signalwayantibody.com

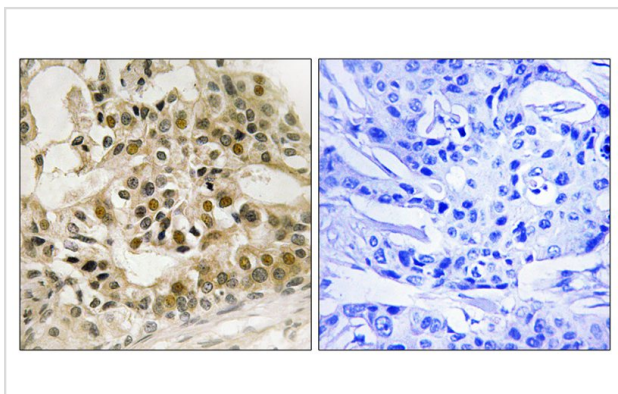
Description

| | |
|-----------------------|---|
| Product Name | Myb (Phospho-Ser532) Antibody |
| Host Species | Rabbit |
| Clonality | Polyclonal |
| Purification | Antibodies were produced by immunizing rabbits with synthetic phosphopeptide and KLH conjugates. Antibodies were purified by affinity-chromatography using epitope-specific phosphopeptide. Non-phospho specific antibodies were removed by chromatography using non-phosphopeptide. |
| Applications | IHC |
| Species Reactivity | Hu Ms |
| Specificity | The antibody detects endogenous levels of Myb only when phosphorylated at serine 532. |
| Immunogen Type | peptide |
| Immunogen Description | Peptide sequence around phosphorylation site of serine 532 (V-E-S(p)-P-T) derived from Human Myb. |
| Target Name | Myb |
| Modification | Phospho-Ser532 |
| Other Names | C-myb; Myb proto-oncogene protein |
| Accession No. | Swiss-Prot#:P10242;NCBI Gene#:4602 |
| Concentration | 1.0mg/ml |
| Formulation | Rabbit IgG in phosphate buffered saline (without Mg ²⁺ and Ca ²⁺), pH 7.4, 150mM NaCl, 0.02% sodium azide and 50% glycerol. |
| Storage | Store at -20°C |

Application Details

Immunohistochemistry: 1:50~1:100

Images



Immunohistochemistry analysis of paraffin-embedded human breast carcinoma tissue using Myb (Phospho-Ser532) antibody #12145. The picture on the right is treated with the synthesized peptide.

Background

Transcriptional activator; DNA-binding protein that specifically recognize the sequence 5'-YAAC[GT]G-3'. Plays an important role in the control of proliferation and differentiation of hematopoietic progenitor cells.

Note: This product is for in vitro research use only and is not intended for use in humans or animals.