

## FANCG (Phospho-Ser383) Antibody

Catalog No: #12138



Package Size: #12138-1 50ul #12138-2 100ul

Orders: order@signalwayantibody.com

Support: tech@signalwayantibody.com

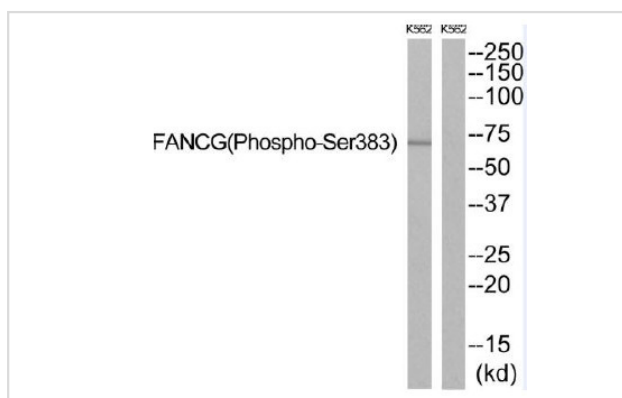
## Description

Product Name	FANCG (Phospho-Ser383) Antibody
Host Species	Rabbit
Clonality	Polyclonal
Purification	Antibodies were produced by immunizing rabbits with synthetic phosphopeptide and KLH conjugates. Antibodies were purified by affinity-chromatography using epitope-specific phosphopeptide. Non-phospho specific antibodies were removed by chromatography using non-phosphopeptide.
Applications	WB
Species Reactivity	Hu
Specificity	The antibody detects endogenous levels of FANCG only when phosphorylated at serine 383.
Immunogen Description	Peptide sequence around phosphorylation site of serine 383 (R-F-S(p)-P-P) derived from Human FANCG.
Target Name	FANCG
Modification	Phospho-Ser383
Other Names	Fanconi anemia group G protein;Protein FACG;DNA repair protein XRCC9
Accession No.	Swiss-Prot#:O15287;NCBI Gene#:2189
SDS-PAGE MW	69kd
Concentration	1.0mg/ml
Formulation	Rabbit IgG in phosphate buffered saline (without Mg <sup>2+</sup> and Ca <sup>2+</sup> ), pH 7.4, 150mM NaCl, 0.02% sodium azide and 50% glycerol.
Storage	Store at -20°C

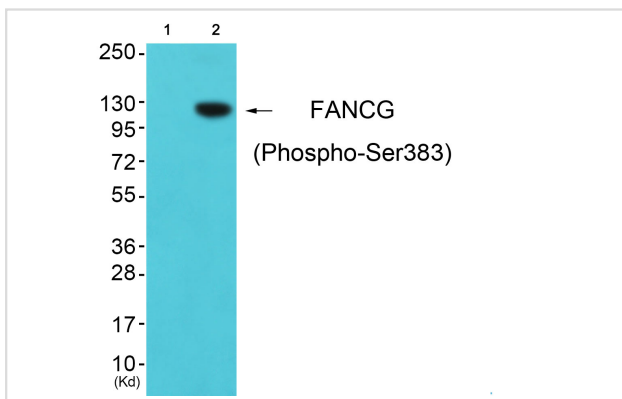
## Application Details

Western blotting: 1:500~1:3000

## Images



Western blot analysis of extracts from K562 cells, using FANCG (Phospho-Ser383) antibody #12138. The lane on the right is treated with the synthesized peptide.



Western blot analysis of extracts from cos-7 cells (Lane 2), using FANCG (Phospho-Ser383) Antibody #12138. The lane on the left is treated with synthesized peptide

## Background

DNA repair protein that may operate in a postreplication repair or a cell cycle checkpoint function. May be implicated in interstrand DNA cross-link repair and in the maintenance of normal chromosome stability. Candidate tumor suppressor gene.

Note: This product is for in vitro research use only and is not intended for use in humans or animals.