

CSFR (Phospho-Tyr809) Antibody

Catalog No: #12135

Package Size: #12135-1 50ul #12135-2 100ul

Orders: order@signalwayantibody.com

Support: tech@signalwayantibody.com

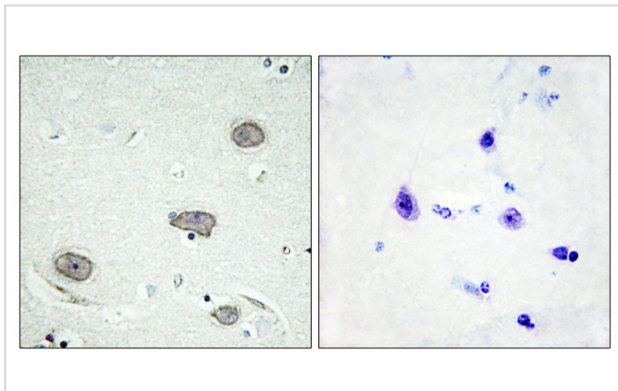
Description

Product Name	CSFR (Phospho-Tyr809) Antibody
Host Species	Rabbit
Clonality	Polyclonal
Purification	Antibodies were produced by immunizing rabbits with synthetic phosphopeptide and KLH conjugates. Antibodies were purified by affinity-chromatography using epitope-specific phosphopeptide. Non-phospho specific antibodies were removed by chromatography using non-phosphopeptide.
Applications	IHC
Species Reactivity	Hu
Specificity	The antibody detects endogenous levels of CSFR only when phosphorylated at tyrosine 809.
Immunogen Type	peptide
Immunogen Description	Peptide sequence around phosphorylation site of tyrosine 809 (S-N-Y(p)-I-V) derived from Human CSFR.
Target Name	CSFR
Modification	Phospho-Tyr809
Other Names	CD115; CSF-1-R; CSF1R; CSFMR; EC 2.7.10.1; FMS; Fms proto-oncogene; M-CSFR; Macrophage colony stimulating factor I receptor precursor; c-fms; kinase CSFR
Accession No.	Swiss-Prot#:P07333;NCBI Gene#:1436
Concentration	1.0mg/ml
Formulation	Rabbit IgG in phosphate buffered saline (without Mg ²⁺ and Ca ²⁺), pH 7.4, 150mM NaCl, 0.02% sodium azide and 50% glycerol.
Storage	Store at -20°C

Application Details

Immunohistochemistry: 1:50~1:100

Images



Immunohistochemistry analysis of paraffin-embedded human brain tissue using CSFR (Phospho-Tyr809) antibody #12135. The picture on the right is treated with the synthesized peptide.

Background

Tyrosine-protein kinase that acts as cell-surface receptor for CSF1 and IL35 and plays an essential role in the regulation of survival, proliferation and differentiation of hematopoietic precursor cells, especially mononuclear phagocytes, such as macrophages.

Note: This product is for in vitro research use only and is not intended for use in humans or animals.