

## CSFR (Phospho-Tyr699) Antibody

Catalog No: #12134



Package Size: #12134-1 50ul #12134-2 100ul

Orders: order@signalwayantibody.com

Support: tech@signalwayantibody.com

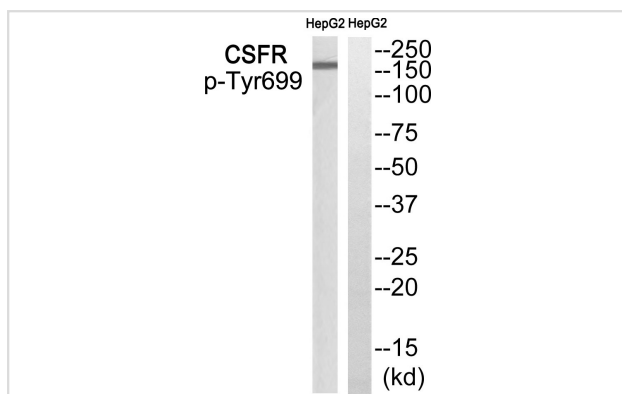
## Description

Product Name	CSFR (Phospho-Tyr699) Antibody
Host Species	Rabbit
Clonality	Polyclonal
Purification	Antibodies were produced by immunizing rabbits with synthetic phosphopeptide and KLH conjugates. Antibodies were purified by affinity-chromatography using epitope-specific phosphopeptide. Non-phospho specific antibodies were removed by chromatography using non-phosphopeptide.
Applications	WB
Species Reactivity	Hu
Specificity	The antibody detects endogenous levels of CSF1R only when phosphorylated at tyrosine 699.
Immunogen Type	peptide
Immunogen Description	Peptide sequence around phosphorylation site of tyrosine 699 (V-D-Y(p)-K-N) derived from Human CSF1R.
Target Name	CSFR
Modification	Phospho-Tyr699
Other Names	C-FMS; CD115; CD115 antigen; colony stimulating factor 1 receptor; CSF-1-R; CSF1R; CSFR; FIM2; FMS; FMS proto-oncogene; macrophage colony stimulating factor I receptor; Macrophage colony-stimulating factor 1 receptor; McDonough feline sarcoma viral (v-fms)
Accession No.	Swiss-Prot#:P07333;NCBI Gene#:1436
SDS-PAGE MW	160kd
Concentration	1.0mg/ml
Formulation	Rabbit IgG in phosphate buffered saline (without Mg <sup>2+</sup> and Ca <sup>2+</sup> ), pH 7.4, 150mM NaCl, 0.02% sodium azide and 50% glycerol.
Storage	Store at -20°C

## Application Details

Western blotting: 1:500~1:3000

## Images



Western blot analysis of extracts from HepG2 cells, using CSFR (Phospho-Tyr699) antibody #12134. The lane on the right is treated with the synthesized peptide.

## Background

---

Tyrosine-protein kinase that acts as cell-surface receptor for CSF1 and IL34 and plays an essential role in the regulation of survival, proliferation and differentiation of hematopoietic precursor cells, especially mononuclear phagocytes, such as macrophages and monocytes. Promotes the release of proinflammatory chemokines in response to IL34 and CSF1, and thereby plays an important role in innate immunity and in inflammatory processes. Plays an important role in the regulation of osteoclast proliferation and differentiation, the regulation of bone resorption, and is required for normal bone and tooth development. Required for normal male and female fertility, and for normal development of milk ducts and acinar structures in the mammary gland during pregnancy.

---

Note: This product is for in vitro research use only and is not intended for use in humans or animals.