

ALOX5 (Phospho-Ser523) Antibody

Catalog No: #12128

Package Size: #12128-1 50ul #12128-2 100ul

Orders: order@signalwayantibody.comSupport: tech@signalwayantibody.com

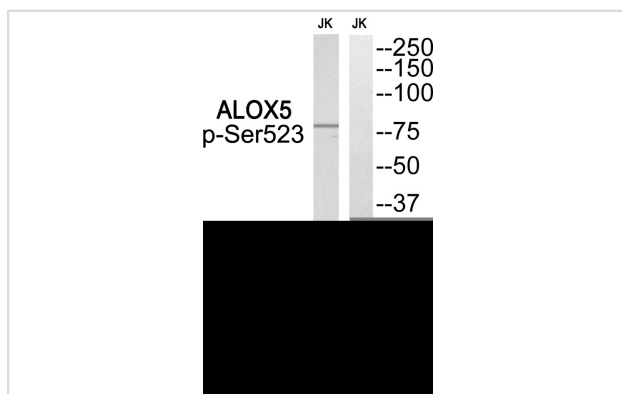
Description

Product Name	ALOX5 (Phospho-Ser523) Antibody
Host Species	Rabbit
Clonality	Polyclonal
Purification	Antibodies were produced by immunizing rabbits with synthetic phosphopeptide and KLH conjugates. Antibodies were purified by affinity-chromatography using epitope-specific phosphopeptide. Non-phospho specific antibodies were removed by chromatography using non-phosphopeptide.
Applications	WB
Species Reactivity	Hu Rt
Specificity	The antibody detects endogenous levels of ALOX5 only when phosphorylated at serine523.
Immunogen Type	peptide
Immunogen Description	Peptide sequence around phosphorylation site of serine 523 (R-K-S(p)-K-G) derived from Human ALOX5.
Target Name	ALOX5
Modification	Phospho-Ser523
Other Names	5-lipoxygenase; 5-LO; 5-LOX; 5LPG; ALOX5; Arachidonate 5-lipoxygenase; arachidonic acid 5-lipoxygenase; leukotriene A4 synthase; LOG5; LOX5; MGC163204
Accession No.	Swiss-Prot#:P09917;NCBI Gene#:240
SDS-PAGE MW	78kd
Concentration	1.0mg/ml
Formulation	Rabbit IgG in phosphate buffered saline (without Mg ²⁺ and Ca ²⁺), pH 7.4, 150mM NaCl, 0.02% sodium azide and 50% glycerol.
Storage	Store at -20°C

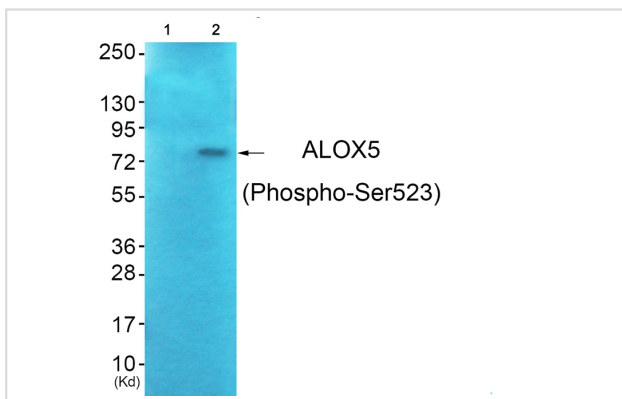
Application Details

Western blotting: 1:500~1:3000

Images



Western blot analysis of extracts from Jurkat cells, using ALOX5 (Phospho-Ser523) antibody #12128. The lane on the right is treated with the synthesized peptide.



Western blot analysis of extracts from JK cells (Lane 2), using ALOX5 (Phospho-Ser523) Antibody #12128. The lane on the left is treated with synthesized peptide.

Background

Catalyzes the first step in leukotriene biosynthesis, and thereby plays a role in inflammatory processes.

Note: This product is for in vitro research use only and is not intended for use in humans or animals.