

53BP1 (Phospho-Ser25) Antibody

Catalog No: #12125

Package Size: #12125-1 50ul #12125-2 100ul

Orders: order@signalwayantibody.comSupport: tech@signalwayantibody.com

Description

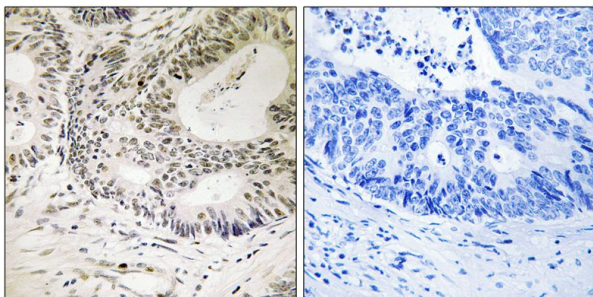
Product Name	53BP1 (Phospho-Ser25) Antibody
Host Species	Rabbit
Clonality	Polyclonal
Purification	Antibodies were produced by immunizing rabbits with synthetic phosphopeptide and KLH conjugates. Antibodies were purified by affinity-chromatography using epitope-specific phosphopeptide. Non-phospho specific antibodies were removed by chromatography using non-phosphopeptide.
Applications	IHC IF
Species Reactivity	Hu Ms Rt
Specificity	The antibody detects endogenous levels of 53BP1 only when phosphorylated at serine 25.
Immunogen Type	peptide
Immunogen Description	Peptide sequence around phosphorylation site of serine 25 (E-D-S(p)-Q-P) derived from Human 53BP1.
Target Name	53BP1
Modification	Phospho-Ser25
Other Names	P531; TP53B; TP53BP1; TRP53BP1; Tumor suppressor p53-binding protein 1; p53-binding protein 1
Accession No.	Swiss-Prot#:Q12888;NCBI Gene#:7158
Concentration	1.0mg/ml
Formulation	Rabbit IgG in phosphate buffered saline (without Mg ²⁺ and Ca ²⁺), pH 7.4, 150mM NaCl, 0.02% sodium azide and 50% glycerol.
Storage	Store at -20°C

Application Details

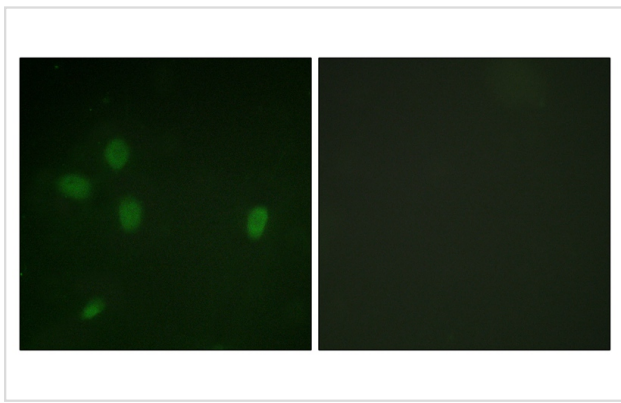
Immunohistochemistry: 1:50~1:100

Immunofluorescence: 1:100~1:500

Images



Immunohistochemistry analysis of paraffin-embedded human colon carcinoma tissue using 53BP1 (Phospho-Ser25) antibody #12125. The picture on the right is treated with the synthesized peptide.



Immunofluorescence analysis of NIH/3T3 cells, using 53BP1 (Phospho-Ser25) antibody #12125. The picture on the right is treated with the synthesized peptide.

Background

Plays a key role in the response to DNA damage. May have a role in checkpoint signaling during mitosis. Enhances TP53-mediated transcriptional activation.

Note: This product is for in vitro research use only and is not intended for use in humans or animals.