

## 4E-BP1 (Phospho-Ser64) Antibody

Catalog No: #12124



Package Size: #12124-1 50ul #12124-2 100ul

Orders: order@signalwayantibody.com

Support: tech@signalwayantibody.com

## Description

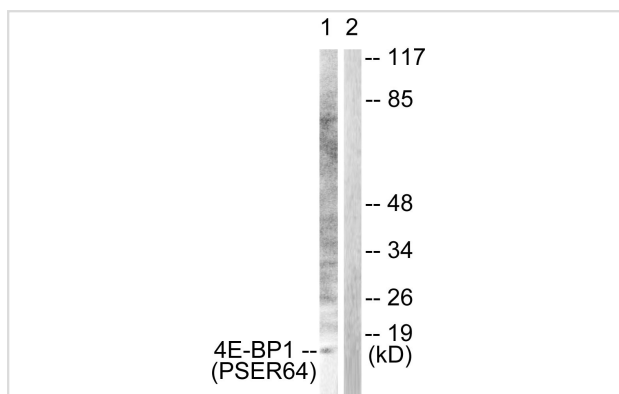
Product Name	4E-BP1 (Phospho-Ser64) Antibody
Host Species	Rabbit
Clonality	Polyclonal
Purification	Antibodies were produced by immunizing rabbits with synthetic phosphopeptide and KLH conjugates. Antibodies were purified by affinity-chromatography using epitope-specific phosphopeptide. Non-phospho specific antibodies were removed by chromatography using non-phosphopeptide.
Applications	WB IHC
Species Reactivity	Hu Ms Rt
Specificity	The antibody detects endogenous levels of 4E-BP1 only when phosphorylated at serine 64.
Immunogen Type	peptide
Immunogen Description	Peptide sequence around phosphorylation site of serine 64 (R-N-S(p)-P-V) derived from Human 4E-BP1.
Target Name	4E-BP1
Modification	Phospho-Ser64
Other Names	4EBP1; EIF4EBP1; Eukaryotic translation initiation factor 4E binding protein 1; Insulin-stimulated EIF-4E binding protein PHAS-I; P/OKCL.6; PHAS-1; PHAS-
Accession No.	Swiss-Prot#:Q13541;NCBI Gene#:1978
SDS-PAGE MW	15kd
Concentration	1.0mg/ml
Formulation	Rabbit IgG in phosphate buffered saline (without Mg <sup>2+</sup> and Ca <sup>2+</sup> ), pH 7.4, 150mM NaCl, 0.02% sodium azide and 50% glycerol.
Storage	Store at -20°C

## Application Details

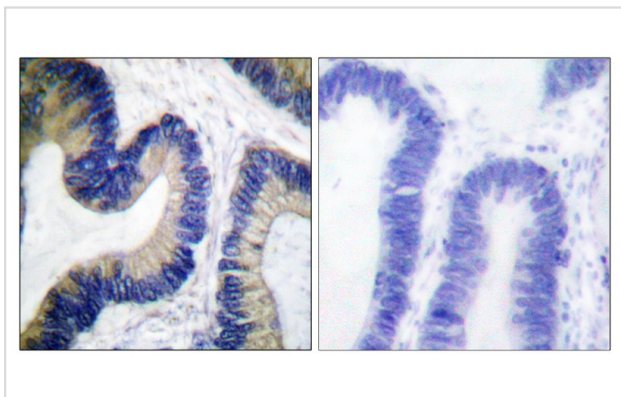
Western blotting: 1:500~1:3000

Immunohistochemistry: 1:50~1:100

## Images



Western blot analysis of extracts from Jurkat cells, treated with Insulin (0.01U/ml, 15mins), using 4E-BP1 (Phospho-Ser64) antibody #12124. The lane on the right is treated with the synthesized peptide.



Immunohistochemical analysis of paraffin-embedded human colon carcinoma tissue using 4E-BP1 (Phospho-Ser64) antibody (#A0401) #12124. The picture on the right is treated with the synthesized peptide.

## Background

Regulates eIF4E activity by preventing its assembly into the eIF4F complex: hypophosphorylated form competes with EIF4G1/EIF4G3 and strongly binds to EIF4E, leading to repress translation. Mediates the regulation of protein translation by hormones, growth factors and other stimuli that signal through the MAP kinase and mTORC1 pathways.

Note: This product is for in vitro research use only and is not intended for use in humans or animals.