

## TK (Phospho-Ser13) Antibody

Catalog No: #12027

Package Size: #12027-1 50ul #12027-2 100ul

Orders: order@signalwayantibody.com

Support: tech@signalwayantibody.com

## Description

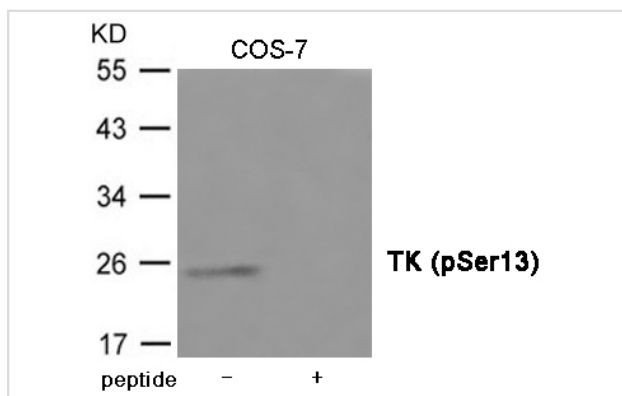
Product Name	TK (Phospho-Ser13) Antibody
Host Species	Rabbit
Clonality	Polyclonal
Purification	Antibodies were produced by immunizing rabbits with synthetic phosphopeptide and KLH conjugates. Antibodies were purified by affinity-chromatography using epitope-specific phosphopeptide. Non-phospho specific antibodies were removed by chromatography using non-phosphopeptide.
Applications	WB
Species Reactivity	Hu
Specificity	The antibody detects endogenous level of TK only when phosphorylated at Serine 13.
Immunogen Type	Peptide-KLH
Immunogen Description	Peptide sequence around phosphorylation site of Serine 13(P-G-S(p)-P-S) derived from Human TK.
Target Name	TK
Modification	Phospho-Ser13
Other Names	TK2
Accession No.	Swiss-Prot#: P04183; NCBI Gene#: 7083; NCBI Protein#: XP_005257688.1
SDS-PAGE MW	25kd
Concentration	1.0mg/ml
Formulation	Supplied at 1.0mg/mL in phosphate buffered saline (without Mg <sup>2+</sup> and Ca <sup>2+</sup> ), pH 7.4, 150mM NaCl, 0.02% sodium azide and 50% glycerol.
Storage	Store at -20°C/1 year

## Application Details

Predicted MW: 25kd

Western blotting: 1:500~1:1000

## Images



Western blot analysis of extracts from COS-7 cells using TK (Phospho-Ser13) Antibody #12027. The lane on the right is treated with the antigen-specific peptide.

## Background

---

TK is a cytosolic thymidine kinase. Phosphorylated during mitosis. Its enzymatic activity is high in proliferating cells and peaks during the S-phase of the cell cycle; it is very low in resting cells.

---

Note: This product is for in vitro research use only and is not intended for use in humans or animals.