

CSFR (Phospho-Tyr708) Antibody

Catalog No: #11832



Package Size: #11832-1 50ul #11832-2 100ul

Orders: order@signalwayantibody.com

Support: tech@signalwayantibody.com

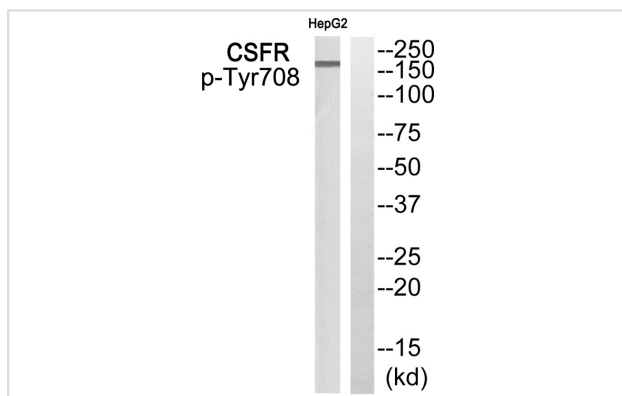
Description

| | |
|-----------------------|--|
| Product Name | CSFR (Phospho-Tyr708) Antibody |
| Host Species | Rabbit |
| Clonality | Polyclonal |
| Purification | Antibodies were produced by immunizing rabbits with synthetic phosphopeptide and KLH conjugates. Antibodies were purified by affinity-chromatography using epitope-specific phosphopeptide. Non-phospho specific antibodies were removed by chromatography using non-phosphopeptide. |
| Applications | WB |
| Species Reactivity | Hu |
| Specificity | The Antibody detects endogenous levels of CSF1R only when phosphorylated at tyrosine 708. |
| Immunogen Type | Peptide-KLH |
| Immunogen Description | Peptide sequence around phosphorylation site of tyrosine 708 (K-K-Y(p)-V-R) derived from Human CSFR . |
| Target Name | CSFR |
| Modification | Phospho-Tyr708 |
| Other Names | C-FMS; CD115; CSF1R; FIM2; FMS |
| Accession No. | Swiss-Prot#: P07333; NCBI Gene#: 1436; NCBI Protein#: NP_001275634.1. |
| SDS-PAGE MW | 200kd |
| Concentration | 1.0mg/ml |
| Formulation | Rabbit IgG in phosphate buffered saline (without Mg ²⁺ and Ca ²⁺), pH 7.4, 150mM NaCl, 0.02% sodium azide and 50% glycerol. |
| Storage | Store at -20°C/1 year |

Application Details

Western blotting: 1:500~1:1000

Images



Western blot analysis of extracts from HepG2 cells using CSFR (Phospho-Tyr708) Antibody #11832. The lane on the right is treated with the antigen-specific peptide.

Background

Tyrosine-protein kinase that acts as cell-surface receptor for CSF1 and IL34 and plays an essential role in the regulation of survival, proliferation and differentiation of hematopoietic precursor cells, especially mononuclear phagocytes, such as macrophages and monocytes. Promotes the release of proinflammatory chemokines in response to IL34 and CSF1, and thereby plays an important role in innate immunity and in inflammatory processes. Plays an important role in the regulation of osteoclast proliferation and differentiation, the regulation of bone resorption, and is required for normal bone and tooth development.

Hampe A., *Oncogene Res.* 4:9-17(1989) .

Andre C., *Genomics* 39:216-226(1997).

Note: This product is for in vitro research use only and is not intended for use in humans or animals.