

# Paxillin (Phospho-Ser178) Antibody

Catalog No: #11773

Package Size: #11773-1 50ul #11773-2 100ul

Orders: [order@signalwayantibody.com](mailto:order@signalwayantibody.com)Support: [tech@signalwayantibody.com](mailto:tech@signalwayantibody.com)

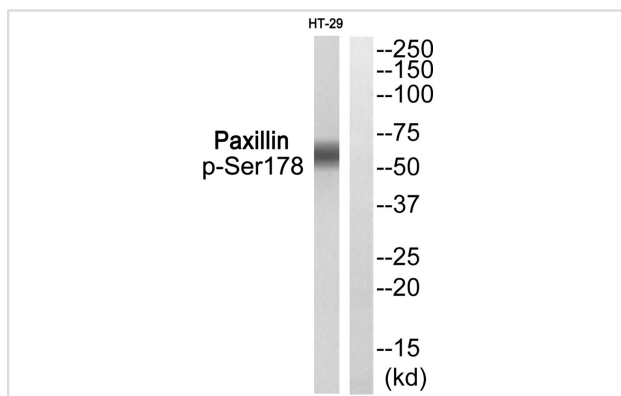
## Description

Product Name	Paxillin (Phospho-Ser178) Antibody
Host Species	Rabbit
Clonality	Polyclonal
Purification	Antibodies were produced by immunizing rabbits with synthetic phosphopeptide and KLH conjugates. Antibodies were purified by affinity-chromatography using epitope-specific phosphopeptide. Non-phospho specific antibodies were removed by chromatography using non-phosphopeptide.
Applications	WB
Species Reactivity	Hu
Specificity	The Antibody detects endogenous levels of Paxillin only when phosphorylated at Ser178.
Immunogen Type	Peptide-KLH
Immunogen Description	Peptide sequence around phosphorylation site of Serine 178(A-L-S(p)-P-L) derived from Human Paxillin.
Target Name	Paxillin
Modification	Phospho-Ser178
Other Names	Paxillin; PXN;
Accession No.	Swiss-Prot#: P49023; NCBI Gene#: 5829; NCBI Protein#: NP_001074324.1.
SDS-PAGE MW	60kd
Concentration	1.0mg/ml
Formulation	Rabbit IgG in phosphate buffered saline (without Mg <sup>2+</sup> and Ca <sup>2+</sup> ), pH 7.4, 150mM NaCl, 0.02% sodium azide and 50% glycerol.
Storage	Store at -20°C/1 year

## Application Details

Western blotting: 1:500~1:1000

## Images



Western blot analysis of extracts from HT-29 using Paxillin (Phospho-Ser178) Antibody #11773. The lane on the right is treated with the antigen-specific peptide.

## Background

---

Cytoskeletal protein involved in actin-membrane attachment at sites of cell adhesion to the extracellular matrix (focal adhesion).

S Chen L.B., Griffin J.D. J. Biol. Chem. 270:5039-5047(1995)

Bell G.I.Submitted (JAN-1997) to the EMBL/GenBank/DDBJ databases

---

Note: This product is for in vitro research use only and is not intended for use in humans or animals.