

FER (Phospho-Tyr402) Antibody

Catalog No: #11730

Package Size: #11730-1 50ul #11730-2 100ul

Orders: order@signalwayantibody.com

Support: tech@signalwayantibody.com

Description

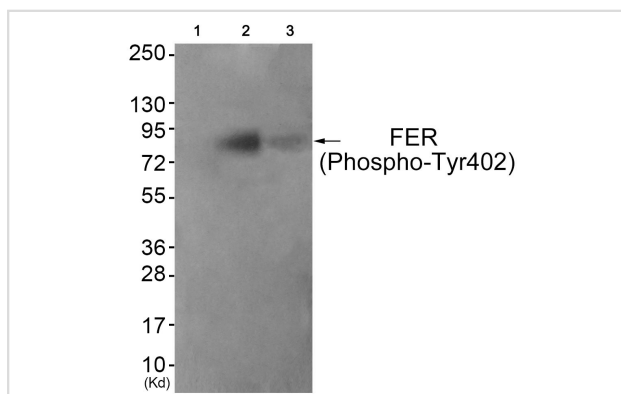
| | |
|-----------------------|--|
| Product Name | FER (Phospho-Tyr402) Antibody |
| Host Species | Rabbit |
| Clonality | Polyclonal |
| Purification | Antibodies were produced by immunizing rabbits with synthetic phosphopeptide and KLH conjugates. Antibodies were purified by affinity-chromatography using epitope-specific phosphopeptide. Non-phospho specific antibodies were removed by chromatography using non-phosphopeptide. |
| Applications | WB IHC |
| Species Reactivity | Hu Ms |
| Specificity | The antibody detects endogenous levels of FER only when phosphorylated at tyrosine 402. |
| Immunogen Type | Peptide-KLH |
| Immunogen Description | Peptide sequence around phosphorylation site of tyrosine 402(V-N-Y(p)-E-E) derived from Human FER . |
| Target Name | FER |
| Modification | Phospho-Tyr402 |
| Other Names | FER; FERT2; TYK3; p94-FER; |
| Accession No. | Swiss-Prot#: P16591; NCBI Gene#: 2241; NCBI Protein#: NP_005237.2. |
| SDS-PAGE MW | 85kd |
| Concentration | 1.0mg/ml |
| Formulation | Rabbit IgG in phosphate buffered saline (without Mg ²⁺ and Ca ²⁺), pH 7.4, 150mM NaCl, 0.02% sodium azide and 50% glycerol. |
| Storage | Store at -20°C/1 year |

Application Details

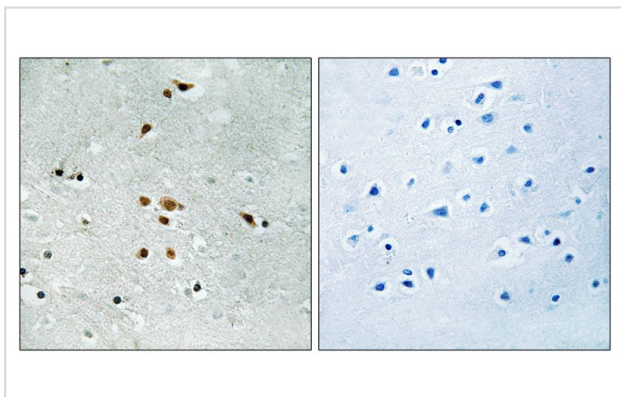
Western blotting: 1:500~1:1000

Immunohistochemistry: 1:50~1:100

Images



Western blot analysis of extracts from JK cells (Lane 2) and COS7 cells (Lane 3), using FER (Phospho-Tyr402) Antibody #11730. The lane on the left is treated with antigen-specific peptide.



Immunohistochemical analysis of paraffin-embedded human brain tissue using FER (Phospho-Tyr402) antibody #11730 (left) or the same antibody preincubated with blocking peptide (right).

Background

Fer protein is a member of the FPS/FES family of nontransmembrane receptor tyrosine kinases. It regulates cell-cell adhesion and mediates signaling from the cell surface to the cytoskeleton via growth factor receptors.

Hao Q.-L., *Mol. Cell. Biol.* 9:1587-1593(1989).

Lee S.-T., *Oncogene* 8:3403-3410(1993).

Krolewski J.J., *Oncogene* 5:277-282(1990).

Note: This product is for in vitro research use only and is not intended for use in humans or animals.