

TISB (Phospho-Ser92) Antibody

Catalog No: #11705



Package Size: #11705-1 50ul #11705-2 100ul

Orders: order@signalwayantibody.com

Support: tech@signalwayantibody.com

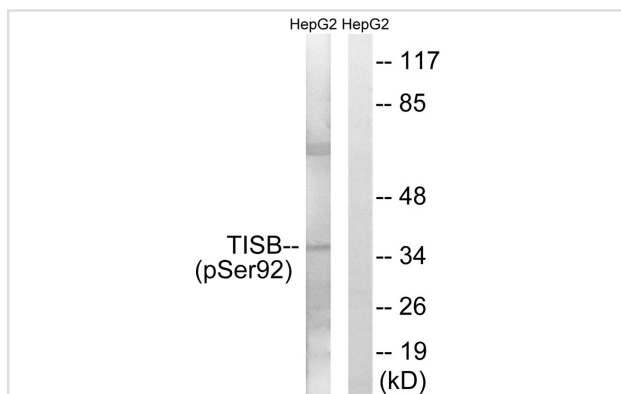
Description

Product Name	TISB (Phospho-Ser92) Antibody
Host Species	Rabbit
Clonality	Polyclonal
Purification	Antibodies were produced by immunizing rabbits with synthetic phosphopeptide and KLH conjugates. Antibodies were purified by affinity-chromatography using epitope-specific phosphopeptide. Non-phospho specific antibodies were removed by chromatography using non-phosphopeptide.
Applications	WB
Species Reactivity	Hu Ms
Specificity	The antibody detects endogenous levels of TISB only when phosphorylated at serine 92.
Immunogen Type	Peptide-KLH
Immunogen Description	Peptide sequence around phosphorylation site of Serine 92(S-F-S(p)-E-G) derived from Human TISB.
Target Name	TISB
Modification	Phospho-Ser92
Other Names	ERF1; ZFP36L1; BRF1; RNF162B; TIS11B
Accession No.	Swiss-Prot#: Q07352; NCBI Gene#: 677; NCBI Protein#: NP_001231627.1.
SDS-PAGE MW	36kd
Concentration	1.0mg/ml
Formulation	Rabbit IgG in phosphate buffered saline (without Mg ²⁺ and Ca ²⁺), pH 7.4, 150mM NaCl, 0.02% sodium azide and 50% glycerol.
Storage	Store at -20°C/1 year

Application Details

Western blotting: 1:500~1:1000

Images



Western blot analysis of extracts from HepG2 cells using TISB (Phospho-Ser92) Antibody #11705. The lane on the right is treated with the antigen-specific peptide.

Background

Probable regulatory protein involved in regulating the response to growth factors.

Barnard R.C., Nucleic Acids Res. 21:3580-3580(1993).

Bustin S.A., DNA Cell Biol. 13:449-459(1994).

Ning Z.Q., Eur. J. Immunol. 26:2356-2363(1996).

Note: This product is for in vitro research use only and is not intended for use in humans or animals.