

BTK (Phospho-Tyr223) Antibody

Catalog No: #11647



Package Size: #11647-1 50ul #11647-2 100ul

Orders: order@signalwayantibody.com

Support: tech@signalwayantibody.com

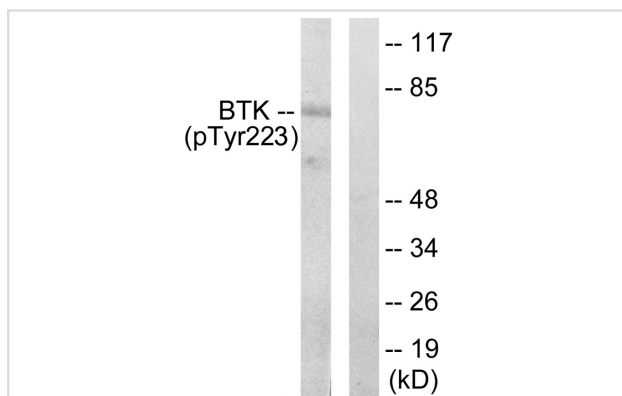
Description

| | |
|-----------------------|--|
| Product Name | BTK (Phospho-Tyr223) Antibody |
| Host Species | Rabbit |
| Clonality | Polyclonal |
| Purification | Antibodies were produced by immunizing rabbits with synthetic phosphopeptide and KLH conjugates. Antibodies were purified by affinity-chromatography using epitope-specific phosphopeptide. Non-phospho specific antibodies were removed by chromatography using non-phosphopeptide. |
| Applications | WB |
| Species Reactivity | Hu Ms |
| Specificity | The antibody detects endogenous levels of BTK only when phosphorylated at tyrosine 223. |
| Immunogen Type | Peptide-KLH |
| Immunogen Description | Peptide sequence around phosphorylation site of tyrosine 223 (A-L-Y(p)-D-Y) derived from Human BTK. |
| Target Name | BTK |
| Modification | Phospho-Tyr223 |
| Other Names | AGMX1; ATK; kinase Btk; BPK; |
| Accession No. | Swiss-Prot#: Q06187; NCBI Gene#: 695; NCBI Protein#: NP_000052.1. |
| SDS-PAGE MW | 80kd |
| Concentration | 1.0mg/ml |
| Formulation | Rabbit IgG in phosphate buffered saline (without Mg ²⁺ and Ca ²⁺), pH 7.4, 150mM NaCl, 0.02% sodium azide and 50% glycerol. |
| Storage | Store at -20°C/1 year |

Application Details

Western blotting: 1:500~1:1000

Images



Western blot analysis of extracts from HeLa cells treated with serum using BTK (phospho-Tyr223) Antibody #11647. The lane on the right is treated with the antigen-specific peptide.

Background

Non-receptor tyrosine kinase indispensable for B lymphocyte development, differentiation and signaling. Binding of antigen to the B-cell antigen receptor (BCR) triggers signaling that ultimately leads to B-cell activation. After BCR engagement and activation at the plasma membrane, phosphorylates PLCG2 at several sites, igniting the downstream signaling pathway through calcium mobilization, followed by activation of the protein kinase C (PKC) family members. PLCG2 phosphorylation is performed in close cooperation with the adapter protein B-cell linker protein BLNK.

Sulekha Verma, *J. Biol. Chem.*, Feb 2001; 276: 4671 - 4676.

Yan M. Li, *Cancer Res.*, Nov 2003; 63: 7630 - 7633.

Malti Nikrad, *Mol. Cancer Ther.*, Mar 2005; 4: 443 - 449.

Feng Dong, *Infect. Immun.*, Mar 2005; 73: 1861 - 1864.

Hiroo Ueno, *Mol. Biol. Cell*, Feb 2

Note: This product is for in vitro research use only and is not intended for use in humans or animals.