

## syk(phospho-Tyr323) Antibody

Catalog No: #11546

Package Size: #11546-1 50ul #11546-2 100ul #11546-4 25ul

Orders: order@signalwayantibody.com

Support: tech@signalwayantibody.com

## Description

Product Name	syk(phospho-Tyr323) Antibody
Host Species	Rabbit
Clonality	Polyclonal
Purification	Antibodies were produced by immunizing rabbits with synthetic phosphopeptide and KLH conjugates. Antibodies were purified by affinity-chromatography using epitope-specific phosphopeptide. Non-phospho specific antibodies were removed by chromatography using non-phosphopeptide.
Applications	WB IHC IF
Species Reactivity	Hu Ms Rt
Specificity	The antibody detects endogenous level of syk only when phosphorylated at tyrosine 323.
Immunogen Type	Peptide-KLH
Immunogen Description	Peptide sequence around phosphorylation site of tyrosine 323 (N-P-Y(p)-E- P) derived from Human syk.
Target Name	syk
Modification	Phospho-Tyr323
Other Names	Spleen tyrosine kinase
Accession No.	Swiss-Prot: P43405NCBI Protein: NP_001128524.1
Concentration	1.0mg/ml
Formulation	Supplied at 1.0mg/mL in phosphate buffered saline (without Mg <sup>2+</sup> and Ca <sup>2+</sup> ), pH 7.4, 150mM NaCl, 0.02% sodium azide and 50% glycerol.
Storage	Store at -20°C for long term preservation (recommended). Store at 4°C for short term use.

## Application Details

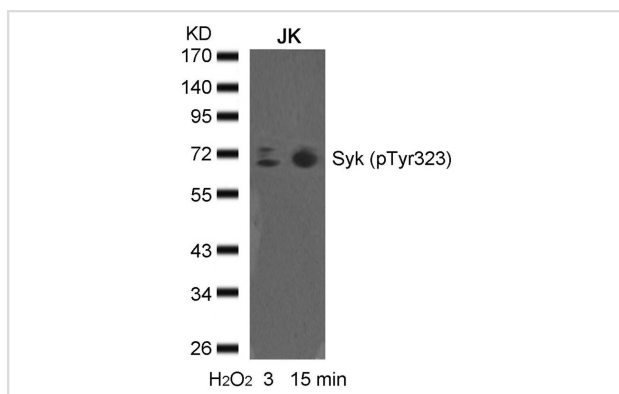
Predicted MW: 72kd

Western blotting: 1:500~1:1000

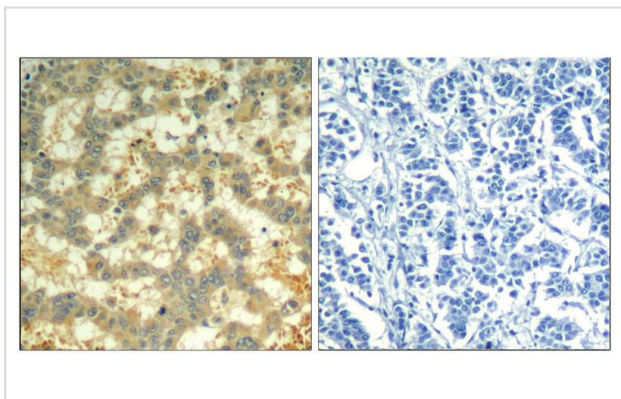
Immunohistochemistry: 1:50~1:100

Immunofluorescence: 1:100~1:200

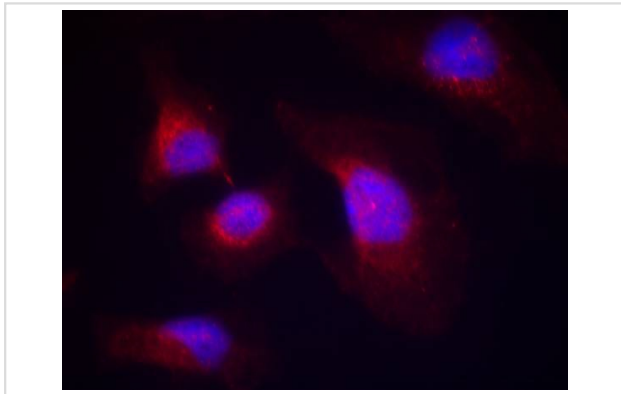
## Images



Western blot analysis of extracts from JK cells untreated or treated with H<sub>2</sub>O<sub>2</sub> for the indicated times, using syk(phospho-Tyr323) Antibody #11546.



Immunohistochemical analysis of paraffin-embedded human breast carcinoma tissue using syk(Phospho-Tyr323) Antibody #11546(left) or the same antibody preincubated with blocking peptide(right).



Immunofluorescence staining of methanol-fixed HeLa cells using syk(phospho-Tyr323) Antibody #11546.

## Background

Positive effector of BCR-stimulated responses. Couples the B-cell antigen receptor (BCR) to the mobilization of calcium ion either through a phosphoinositide 3-kinase-dependent pathway, when not phosphorylated on tyrosines of the linker region, or through a phospholipase C-gamma-dependent pathway, when phosphorylated on Tyr-348 and Tyr-352. Thus the differential phosphorylation of Syk can determine the pathway by which BCR is coupled to the regulation of intracellular calcium ion

Zhang, J. et al. (2000) J. Biol. Chem. 275, 35442-35447.

Turner, M. et al. (2000) Immunol. Today 21, 148-154.

Decker, M. et al. (1998) J. Biol. Chem. 273, 8867-8874.

Law, C.L. et al. (1996) Mol. Cell. Biol. 16, 1305-1315.

Note: This product is for in vitro research use only and is not intended for use in humans or animals.