

Paxillin(phospho-Tyr88) Antibody

Catalog No: #11538



Package Size: #11538-1 50ul #11538-2 100ul #11538-4 25ul

Orders: order@signalwayantibody.com

Support: tech@signalwayantibody.com

Description

Product Name	Paxillin(phospho-Tyr88) Antibody
Host Species	Rabbit
Clonality	Polyclonal
Purification	Antibodies were produced by immunizing rabbits with synthetic phosphopeptide and KLH conjugates. Antibodies were purified by affinity-chromatography using epitope-specific phosphopeptide. Non-phospho specific antibodies were removed by chromatography using non-phosphopeptide.
Applications	WB IF
Species Reactivity	Hu
Specificity	The antibody detects endogenous level of Paxillin only when phosphorylated at tyrosine 88.
Immunogen Type	Peptide-KLH
Immunogen Description	Peptide sequence around phosphorylation site of tyrosine 88 (P-V-Y(p)-G-S) derived from Human Paxillin.
Target Name	Paxillin
Modification	Phospho-Tyr88
Other Names	PAXI; PXN;
Accession No.	Swiss-Prot: P49023NCBI Protein: NP_001074324.1
Concentration	1.0mg/ml
Formulation	Supplied at 1.0mg/mL in phosphate buffered saline (without Mg ²⁺ and Ca ²⁺), pH 7.4, 150mM NaCl, 0.02% sodium azide and 50% glycerol.
Storage	Store at -20°C for long term preservation (recommended). Store at 4°C for short term use.

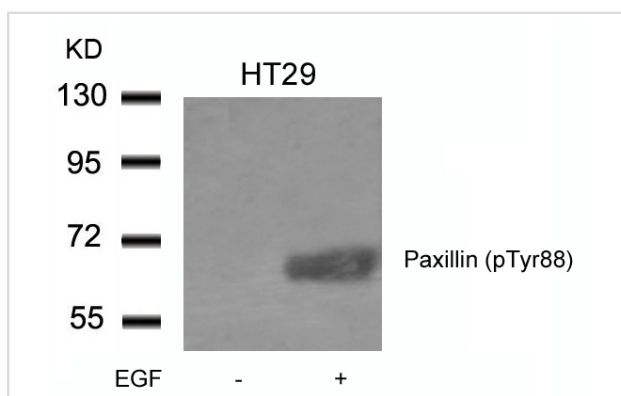
Application Details

Predicted MW: 68kd

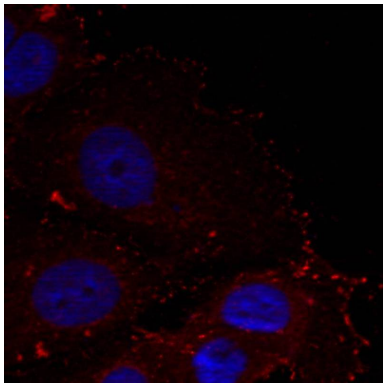
Western blotting: 1:500~1:1000

Immunofluorescence: 1:100~1:200

Images



Western blot analysis of extracts from HT29 cells untreated or treated with EGF using Paxillin(phospho-Tyr88) Antibody #11538.



Immunofluorescence staining of methanol-fixed HeLa cells using Paxillin(phospho-Tyr88) Antibody #11538.

Background

An antiphosphotyrosine antibody was used to identify proteins that are phosphorylated in Rous sarcoma virus-transformed chick embryo fibroblasts, and a 76-kD protein was obtained that localizes to focal adhesions at the ends of actin-containing stress fibers in nontransformed cells (Ref.1). This protein was purified from chicken gizzard smooth muscle, and was named Pxn (Paxillin) ('paxillus' means 'small stake' or 'peg' in Latin) as a protein tethered to the membrane at focal adhesions

Turner, C.E. (2000) J. Cell Sci. 113, 4139-4140

Burridge, K. et al. (1992) J. Cell Biol. 119, 893-903.

Bellis, S. L. et al. (1997) Biochem. J. 325, 375-381.

Note: This product is for in vitro research use only and is not intended for use in humans or animals.