

# a-Synuclein(Phospho-Tyr136) Antibody

Catalog No: #11286



Package Size: #11286-1 50ul #11286-2 100ul #11286-4 25ul

Orders: [order@signalwayantibody.com](mailto:order@signalwayantibody.com)

Support: [tech@signalwayantibody.com](mailto:tech@signalwayantibody.com)

## Description

|                       |  |
|-----------------------|--|
| Product Name          | a-Synuclein(Phospho-Tyr136) Antibody   |
| Host Species          | Rabbit   |
| Clonality             | Polyclonal   |
| Purification          | Antibodies were produced by immunizing rabbits with synthetic phosphopeptide and KLH conjugates. Antibodies were purified by affinity-chromatography using epitope-specific phosphopeptide. Non-phospho specific antibodies were removed by chromatography using non-phosphopeptide. |
| Applications          | WB IF  |
| Species Reactivity    | Hu Ms Rt   |
| Specificity           | The antibody detects endogenous level of a-Synuclein only when phosphorylated at tyrosine 136.   |
| Immunogen Type        | Peptide-KLH  |
| Immunogen Description | Peptide sequence around phosphorylation site of tyrosine 136 (Q-D-Y(p)-E-P) derived from Human a-Synuclein.  |
| Target Name           | a-Synuclein  |
| Modification          | Phospho-Tyr136   |
| Other Names           | NACP; SYN; SYUA  |
| Accession No.         | Swiss-Prot: P37840NCBI Protein: NP_000336.1  |
| Concentration         | 1.0mg/ml   |
| Formulation           | Supplied at 1.0mg/mL in phosphate buffered saline (without Mg <sup>2+</sup> and Ca <sup>2+</sup> ), pH 7.4, 150mM NaCl, 0.02% sodium azide and 50% glycerol.   |
| Storage               | Store at -20°C for long term preservation (recommended). Store at 4°C for short term use.  |

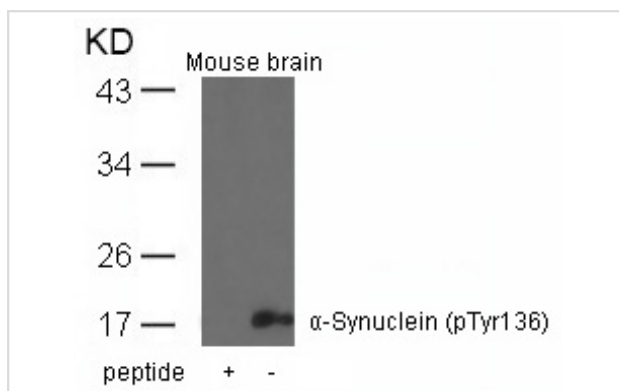
## Application Details

Predicted MW: 18kd

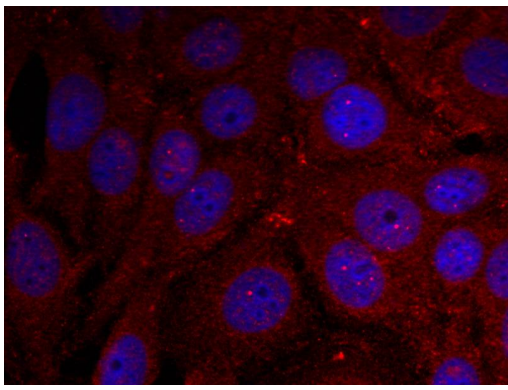
Western blotting: 1:500~1:1000

Immunofluorescence: 1:100~1:200

## Images



Western blot analysis of extracts from mouse brain tissue using a-Synuclein(Phospho-Tyr136) Antibody #11286 and the same antibody preincubated with blocking peptide.



Immunofluorescence staining of methanol-fixed HeLa cells using  $\alpha$ -Synuclein(Phospho-Tyr136) Antibody #11286.

## Background

May be involved in the regulation of dopamine release and transport. Soluble protein, normally localized primarily at the presynaptic region of axons, which can form filamentous aggregates that are the major non amyloid component of intracellular inclusions in several neurodegenerative diseases (synucleinopathies). Induces fibrillization of microtubule-associated protein tau. Reduces neuronal responsiveness to various apoptotic stimuli, leading to a decreased caspase-3 activation.

Takahashi T, et al. J Biol Chem 2003 Oct 24; 278(43): 42225-33

Ahn BH, et al. J Biol Chem 2002 Apr 05; 277(14): 12334-42

Negro A, et al. FASEB J 2002 Feb; 16(2): 210-2

Goldberg, et al. Nat. Cell Biol. 2000; 2, 115-119.

Note: This product is for in vitro research use only and is not intended for use in humans or animals.