

# CREB(Phospho-Ser129) Antibody

Catalog No: #11273

Package Size: #11273-1 50ul #11273-2 100ul #11273-4 25ul

Orders: [order@signalwayantibody.com](mailto:order@signalwayantibody.com)Support: [tech@signalwayantibody.com](mailto:tech@signalwayantibody.com)

## Description

Product Name	CREB(Phospho-Ser129) Antibody
Host Species	Rabbit
Clonality	Polyclonal
Purification	Antibodies were produced by immunizing rabbits with synthetic phosphopeptide and KLH conjugates. Antibodies were purified by affinity-chromatography using epitope-specific phosphopeptide. Non-phospho specific antibodies were removed by chromatography using non-phosphopeptide.
Applications	WB IHC
Species Reactivity	Hu Ms Rt
Specificity	The antibody detects endogenous level of CREB only when phosphorylated at serine 129.
Immunogen Type	Peptide-KLH
Immunogen Description	Peptide sequence around phosphorylation site of serine 129 (I-L-S(p)-R-R) derived from Human CREB.
Target Name	CREB
Modification	Phospho-Ser129
Other Names	CREB-1; CREB1;
Accession No.	Swiss-Prot: P16220NCBI Protein: NP_004370.1
Concentration	1.0mg/ml
Formulation	Supplied at 1.0mg/mL in phosphate buffered saline (without Mg <sup>2+</sup> and Ca <sup>2+</sup> ), pH 7.4, 150mM NaCl, 0.02% sodium azide and 50% glycerol.
Storage	Store at -20°C for long term preservation (recommended). Store at 4°C for short term use.

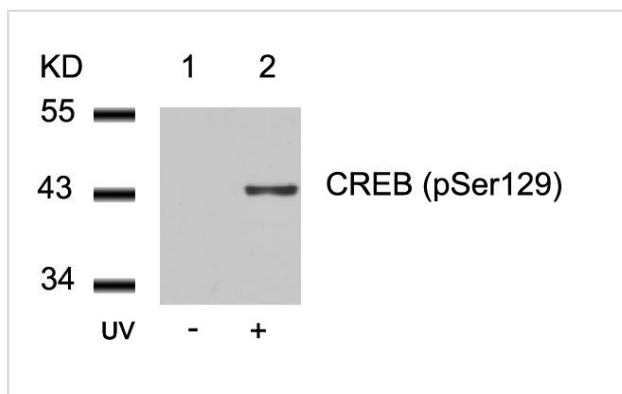
## Application Details

Predicted MW: 43kd

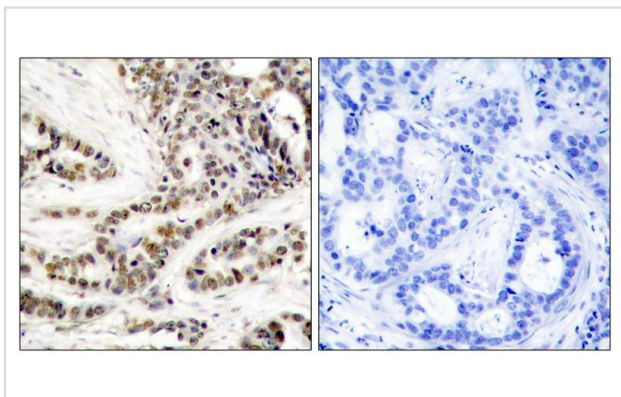
Western blotting: 1:500~1:1000

Immunohistochemistry: 1:50~1:100

## Images



Western blot analysis of extracts from 293 cells untreated(lane 1) or treated with UV(lane 2) using CREB(Phospho-Ser129) Antibody #11273.



Immunohistochemical analysis of paraffin-embedded human breast carcinoma tissue using CREB(Phospho-Ser129) Antibody #11273(left) or the same antibody preincubated with blocking peptide(right).

## Background

This protein binds the cAMP response element (CRE), a sequence present in many viral and cellular promoters. CREB stimulates transcription on binding to the CRE. Transcription activation is enhanced by the TORC coactivators which act independently of Ser-133 phosphorylation. Implicated in synchronization of circadian rhythmicity.

Chrystelle V. Garat, et al. (2006) *Mol. Cell. Biol* ; 26: 4934 - 4948.

Lilah Rothem, et al. (2004) *Mol. Pharmacol* ; 66: 1536 - 1543.

Darren R. Tyson, et al. (2002) *Endocrinology*; 143: 674.

Kyung-Woo Park, et al. (2003) *Arterioscler. Thromb. Vasc. Biol* ; 23: 1364.

Note: This product is for in vitro research use only and is not intended for use in humans or animals.