

# Merlin(Phospho-Ser518) Antibody

Catalog No: #11266

Package Size: #11266-1 50ul #11266-2 100ul #11266-4 25ul

Orders: [order@signalwayantibody.com](mailto:order@signalwayantibody.com)Support: [tech@signalwayantibody.com](mailto:tech@signalwayantibody.com)

## Description

Product Name	Merlin(Phospho-Ser518) Antibody
Host Species	Rabbit
Clonality	Polyclonal
Purification	Antibodies were produced by immunizing rabbits with synthetic phosphopeptide and KLH conjugates. Antibodies were purified by affinity-chromatography using epitope-specific phosphopeptide. Non-phospho specific antibodies were removed by chromatography using non-phosphopeptide.
Applications	WB IF
Species Reactivity	Hu Ms Rt
Specificity	The antibody detects endogenous level of Merlin only when phosphorylated at serine 518.
Immunogen Type	Peptide-KLH
Immunogen Description	Peptide sequence around phosphorylation site of serine 518 (R-L-S(p)-M-E) derived from Human Merlin.
Target Name	Merlin
Modification	Phospho-Ser518
Other Names	MERL; NF2; Neurofibromin 2; SCH; Schwannomerlin
Accession No.	Swiss-Prot: P35240NCBI Protein: NP_000259.1
Concentration	1.0mg/ml
Formulation	Supplied at 1.0mg/mL in phosphate buffered saline (without Mg <sup>2+</sup> and Ca <sup>2+</sup> ), pH 7.4, 150mM NaCl, 0.02% sodium azide and 50% glycerol.
Storage	Store at -20°C for long term preservation (recommended). Store at 4°C for short term use.

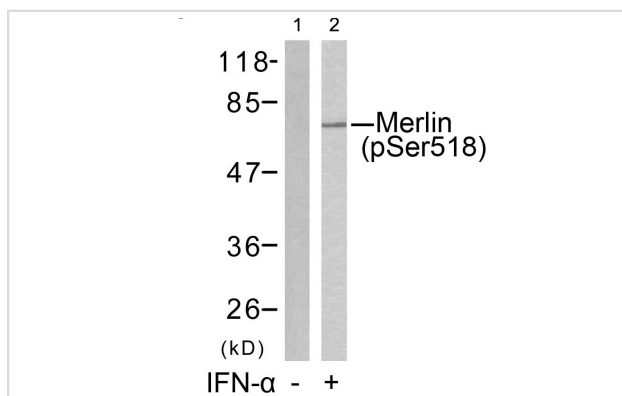
## Application Details

Predicted MW: 69kd

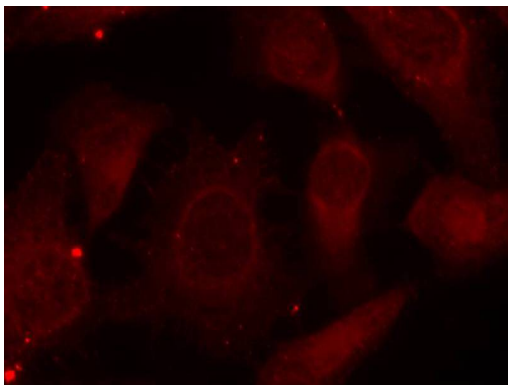
Western blotting: 1:500~1:1000

Immunofluorescence: 1:100~1:200

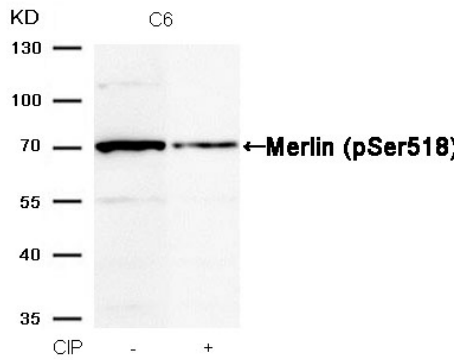
## Images



Western blot analysis of extracts from HUVEC cells untreated (lane 1) or treated with IFN- $\alpha$  (lane 2) using Merlin(Phospho-Ser518) Antibody #11266.



Immunofluorescence staining of methanol-fixed HeLa cells using Merlin(Phospho-Ser518) Antibody #11266.



Western blot analysis of extracts from C6 cells, treated with calf intestinal phosphatase (CIP), using Merlin (Phospho-Ser518) Antibody #11266.

## Background

Probable regulator of the Hippo/SWH (Sav/Wts/Hpo) signaling pathway, a signaling pathway that plays a pivotal role in tumor suppression by restricting proliferation and promoting apoptosis. Along with WWC1 can synergistically induce the phosphorylation of LATS1 and LATS2 and can probably function in the regulation of the Hippo/SWH (Sav/Wts/Hpo) signaling pathway. May act as a membrane stabilizing protein. May inhibit PI3 kinase by binding to AGAP2 and impairing its stimulating activity.

Guang-Hui Xiao, et al. (2005) Mol. Cell. Biol ; 25: 2384 - 2394.

Hi-Su Yang, et al. (2006) Cancer Res ; 66: 2708 - 2715.

R Bohni, et al. (1994) J. Biol. Chem ; 269: 14541 - 14545.

Adam J. Ratner, et al. (2001) J. Biol. Chem ; 276: 19267 - 19275.

Note: This product is for in vitro research use only and is not intended for use in humans or animals.