

EGFR(Phospho-Tyr1197) Antibody

Catalog No: #11228

Package Size: #11228-1 50ul #11228-2 100ul #11228-4 25ul

Orders: order@signalwayantibody.com

Support: tech@signalwayantibody.com

Description

Product Name	EGFR(Phospho-Tyr1197) Antibody
Host Species	Rabbit
Clonality	Polyclonal
Purification	Antibodies were produced by immunizing rabbits with synthetic phosphopeptide and KLH conjugates. Antibodies were purified by affinity-chromatography using epitope-specific phosphopeptide. Non-phospho specific antibodies were removed by chromatography using non-phosphopeptide.
Applications	WB IHC
Species Reactivity	Hu Ms Rt
Specificity	The antibody detects endogenous level of EGFR only when phosphorylated at tyrosine 1197.
Immunogen Type	Peptide-KLH
Immunogen Description	Peptide sequence around phosphorylation site of tyrosine 1197 (A-E-Y(p)-L-R) derived from Human EGFR.
Target Name	EGFR
Modification	Phospho-Tyr1197
Other Names	ERBB1; Receptor protein-tyrosine kinase ErbB-1; kinase EGFR
Accession No.	Swiss-Prot: P00533NCBI Protein: NP_005219.2
Concentration	1.0mg/ml
Formulation	Supplied at 1.0mg/mL in phosphate buffered saline (without Mg ²⁺ and Ca ²⁺), pH 7.4, 150mM NaCl, 0.02% sodium azide and 50% glycerol.
Storage	Store at -20°C for long term preservation (recommended). Store at 4°C for short term use.

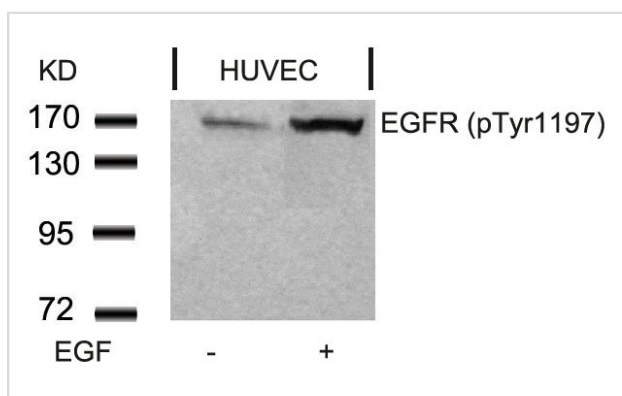
Application Details

Predicted MW: 175kd

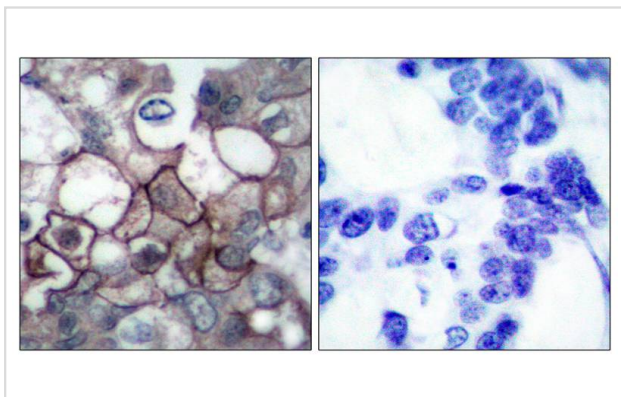
Western blotting: 1:500~1:1000

Immunohistochemistry: 1:50~1:100

Images



Western blot analysis of extracts from HUVEC cells untreated or treated with EGF using EGFR(Phospho-Tyr1197) Antibody #11228.



Immunohistochemical analysis of paraffin-embedded human breast carcinoma tissue using EGFR(Phospho-Tyr1197) Antibody #11228(left) or the same antibody preincubated with blocking peptide(right).

Background

Receptor for EGF, but also for other members of the EGF family, as TGF- α , amphiregulin, betacellulin, heparin-binding EGF-like growth factor, GP30 and vaccinia virus growth factor. Is involved in the control of cell growth and differentiation. Phosphorylates MUC1 in breast cancer cells and increases the interaction of MUC1 with SRC and CTNNB1/beta-catenin.

Corbalan-Garcia S, et al. (1996) Mol Cell Biol; 16(10): 5674-5682

Kanner SB, et al. (1991) Mol Cell Biol; 11(2): 713-720

Wu TT, et al. (1998) Mol Biol Cell; 9(7): 1661-1674

O

Note: This product is for in vitro research use only and is not intended for use in humans or animals.